



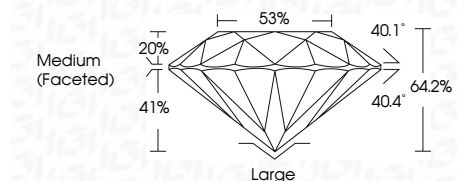
ELECTRONIC COPY

LG791608575
Report verification at igi.org



April 9, 2026
IGI Report Number **LG791608575**
Description **LABORATORY GROWN DIAMOND**
Shape and Cutting Style **OLD EUROPEAN CUT**
Measurements **6.24 - 6.29 X 4.02 MM**

GRADING RESULTS
Carat Weight **1.01 CARAT**
Color Grade **D**
Clarity Grade **VS 2**



ADDITIONAL GRADING INFORMATION
Polish **EXCELLENT**
Symmetry **EXCELLENT**
Fluorescence **NONE**
Inscription(s) **IGI LG791608575**
Comments: This Laboratory Grown Diamond was created by Chemical Vapor Deposition (CVD) growth process. Type IIa



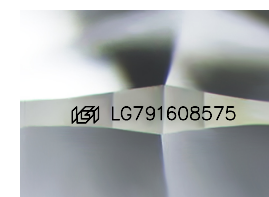
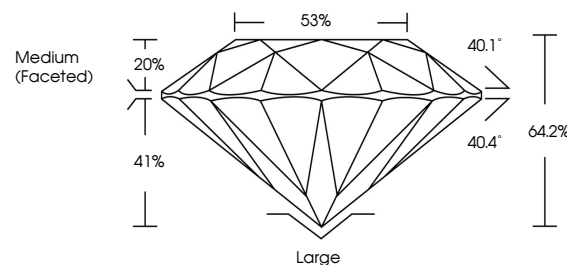
April 9, 2026
IGI Report No LG791608575
OLD EUROPEAN CUT
6.24 - 6.29 X 4.02 MM
1.01 CARAT
D
1.01 CARAT
D
64.2%
85%
Medium (Faceted)
Large
EXCELLENT
EXCELLENT
NONE
IGI LG791608575
Comments: This Laboratory Grown Diamond was created by Chemical Vapor Deposition (CVD) growth process. Type IIa

April 9, 2026
IGI Report Number **LG791608575**
Description **LABORATORY GROWN DIAMOND**
Shape and Cutting Style **OLD EUROPEAN CUT**
Measurements **6.24 - 6.29 X 4.02 MM**

GRADING RESULTS
Carat Weight **1.01 CARAT**
Color Grade **D**
Clarity Grade **VS 2**

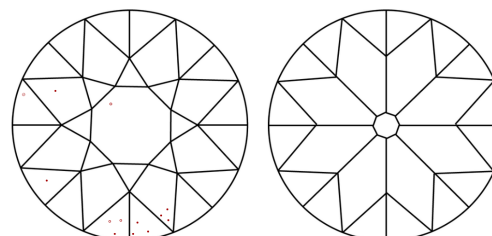
ADDITIONAL GRADING INFORMATION
Polish **EXCELLENT**
Symmetry **EXCELLENT**
Fluorescence **NONE**
Inscription(s) **IGI LG791608575**
Comments: This Laboratory Grown Diamond was created by Chemical Vapor Deposition (CVD) growth process. Type IIa

PROPORTIONS



Sample Image Used

CLARITY CHARACTERISTICS



KEY TO SYMBOLS

Red symbols indicate internal characteristics.
Green symbols indicate external characteristics.

COLOR

D E F G H I J Faint Very Light Light

CLARITY

FL	IF	VS ¹⁻²	VS ¹⁻²	SI ¹⁻²	I ¹⁻³
Flawless	Internally Flawless	Very Very Slightly Included	Very Slightly Included	Slightly Included	Included

