



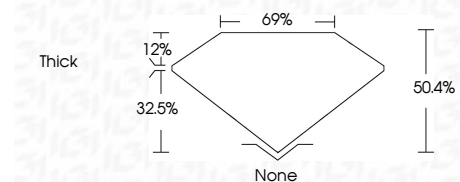
**ELECTRONIC COPY**

LG791607104  
Report verification at igi.org



April 14, 2026  
IGI Report Number **LG791607104**  
Description **LABORATORY GROWN DIAMOND**  
Shape and Cutting Style **MODIFIED KITE STEP CUT**  
Measurements **9.20 X 6.03 X 3.04 MM**

**GRADING RESULTS**  
Carat Weight **1.05 CARAT**  
Color Grade **D**  
Clarity Grade **SI 1**



**ADDITIONAL GRADING INFORMATION**  
Polish **EXCELLENT**  
Symmetry **EXCELLENT**  
Fluorescence **NONE**  
Inscription(s) **IGI LG791607104**  
Comments: This Laboratory Grown Diamond was created by Chemical Vapor Deposition (CVD) growth process. Type IIa



April 14, 2026  
IGI Report No LG791607104  
**MODIFIED KITE STEP CUT**  
9.20 X 6.03 X 3.04 MM  
1.05 CARAT  
D  
SI 1  
69%  
50.4%  
Thick  
None  
EXCELLENT  
EXCELLENT  
NONE  
IGI LG791607104  
Comments: This Laboratory Grown Diamond was created by Chemical Vapor Deposition (CVD) growth process. Type IIa

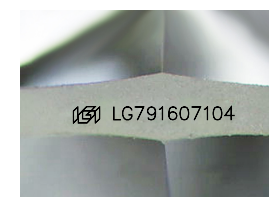
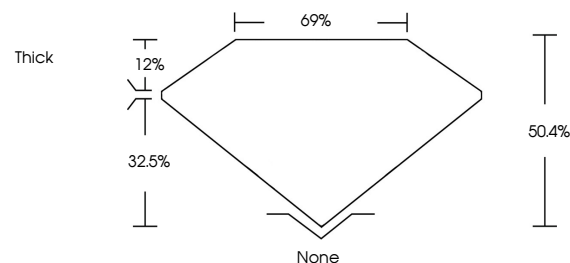
April 14, 2026  
IGI Report Number **LG791607104**  
Description **LABORATORY GROWN DIAMOND**  
Shape and Cutting Style **MODIFIED KITE STEP CUT**  
Measurements **9.20 X 6.03 X 3.04 MM**

**GRADING RESULTS**  
Carat Weight **1.05 CARAT**  
Color Grade **D**  
Clarity Grade **SI 1**

**ADDITIONAL GRADING INFORMATION**  
Polish **EXCELLENT**  
Symmetry **EXCELLENT**  
Fluorescence **NONE**  
Inscription(s) **IGI LG791607104**

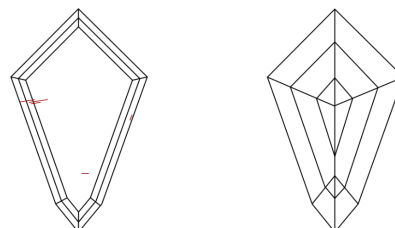
Comments: This Laboratory Grown Diamond was created by Chemical Vapor Deposition (CVD) growth process. Type IIa

**PROPORTIONS**



Sample Image Used

**CLARITY CHARACTERISTICS**



**KEY TO SYMBOLS**

Red symbols indicate internal characteristics.  
Green symbols indicate external characteristics.

**COLOR**

D E F G H I J Faint Very Light Light

**CLARITY**

FL	IF	VS <sup>1-2</sup>	VS <sup>1-2</sup>	SI <sup>1-2</sup>	I <sup>1-3</sup>
Flawless	Internally Flawless	Very Very Slightly Included	Very Slightly Included	Slightly Included	Included

