



**ELECTRONIC COPY**

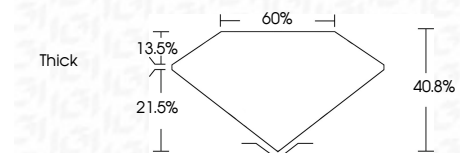
LG791607100  
Report verification at igi.org



April 10, 2026  
IGI Report Number **LG791607100**  
Description **LABORATORY GROWN DIAMOND**  
Shape and Cutting Style **EMERALD ROSE CUT**  
Measurements **7.92 X 5.68 X 2.32 MM**

**GRADING RESULTS**

Carat Weight **1.27 CARAT**  
Color Grade **E**  
Clarity Grade **VVS 2**



**ADDITIONAL GRADING INFORMATION**

Polish **EXCELLENT**  
Symmetry **EXCELLENT**  
Fluorescence **NONE**  
Inscription(s) **IGI LG791607100**  
Comments: This Laboratory Grown Diamond was created by Chemical Vapor Deposition (CVD) growth process. Type IIa



April 10, 2026  
IGI Report No LG791607100  
**EMERALD ROSE CUT**  
7.92 X 5.68 X 2.32 MM  
Carat Weight **1.27 CARAT**  
Color Grade **E**  
Clarity Grade **VVS 2**  
Depth **40.8%**  
Table **21.5%**  
Girdle **Thick**  
Culet **EXCELLENT**  
Polish **EXCELLENT**  
Symmetry **EXCELLENT**  
Fluorescence **NONE**  
Inscription(s) **IGI LG791607100**  
Comments: This Laboratory Grown Diamond was created by Chemical Vapor Deposition (CVD) growth process. Type IIa

**LABORATORY GROWN DIAMOND REPORT**

April 10, 2026  
IGI Report Number **LG791607100**  
Description **LABORATORY GROWN DIAMOND**  
Shape and Cutting Style **EMERALD ROSE CUT**  
Measurements **7.92 X 5.68 X 2.32 MM**

**GRADING RESULTS**

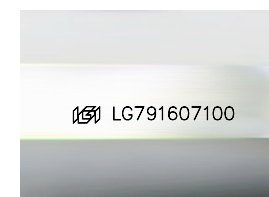
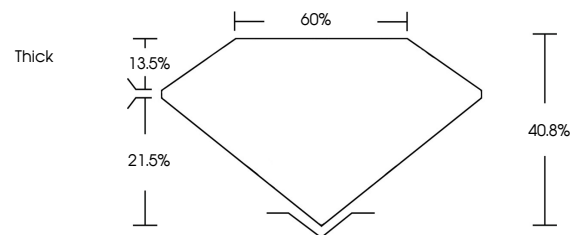
Carat Weight **1.27 CARAT**  
Color Grade **E**  
Clarity Grade **VVS 2**

**ADDITIONAL GRADING INFORMATION**

Polish **EXCELLENT**  
Symmetry **EXCELLENT**  
Fluorescence **NONE**  
Inscription(s) **IGI LG791607100**

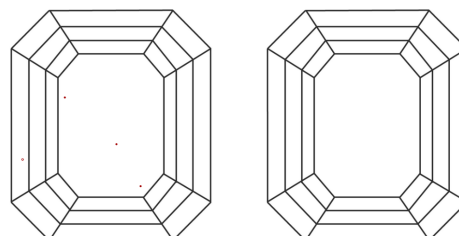
Comments: This Laboratory Grown Diamond was created by Chemical Vapor Deposition (CVD) growth process. Type IIa

**PROPORTIONS**



Sample Image Used

**CLARITY CHARACTERISTICS**



**KEY TO SYMBOLS**

Red symbols indicate internal characteristics.  
Green symbols indicate external characteristics.

**COLOR**

D E F G H I J Faint Very Light Light

**CLARITY**

FL	IF	VVS <sup>1-2</sup>	VS <sup>1-2</sup>	SI <sup>1-2</sup>	I <sup>1-3</sup>
Flawless	Internally Flawless	Very Very Slightly Included	Very Slightly Included	Slightly Included	Included

