



LABORATORY GROWN DIAMOND REPORT

April 10, 2026
 IGI Report Number **LG791606888**
 Description **LABORATORY GROWN DIAMOND**
 Shape and Cutting Style **OVAL BRILLIANT**
 Measurements **7.62 X 5.13 X 3.23 MM**

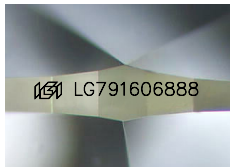
GRADING RESULTS

Carat Weight **0.77 CARAT**
 Color Grade **D**
 Clarity Grade **INTERNALLY FLAWLESS**

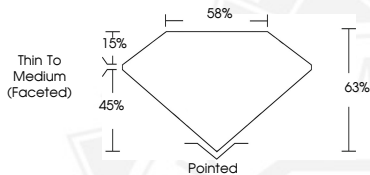
ADDITIONAL GRADING INFORMATION

Polish **EXCELLENT**
 Symmetry **EXCELLENT**
 Fluorescence **NONE**
 Inscription(s) **IGI LG791606888**

Comments: As Grown - No indication of post-growth treatment. This Laboratory Grown Diamond was created by High Pressure High Temperature (HPHT) growth process. Type II



Sample Image Used



April 10, 2026
 IGI Report Number **LG791606888**
OVAL BRILLIANT
LABORATORY GROWN DIAMOND
7.62 X 5.13 X 3.23 MM
 Carat Weight **0.77 CARAT**
 Color Grade **D**
 Clarity Grade **I.F.**
 Polish **EXCELLENT**
 Symmetry **EXCELLENT**
 Fluorescence **NONE**
 Inscription(s) **IGI LG791606888**

Comments: As Grown - No indication of post-growth treatment. This Laboratory Grown Diamond was created by High Pressure High Temperature (HPHT) growth process. Type II



April 10, 2026
 IGI Report Number **LG791606888**
OVAL BRILLIANT
LABORATORY GROWN DIAMOND
7.62 X 5.13 X 3.23 MM
 Carat Weight **0.77 CARAT**
 Color Grade **D**
 Clarity Grade **I.F.**
 Polish **EXCELLENT**
 Symmetry **EXCELLENT**
 Fluorescence **NONE**
 Inscription(s) **IGI LG791606888**

Comments: As Grown - No indication of post-growth treatment. This Laboratory Grown Diamond was created by High Pressure High Temperature (HPHT) growth process. Type II



THIS DOCUMENT WAS PRODUCED WITH THE FOLLOWING SECURITY MEASURES: SPECIAL DOCUMENT PAPER, INK SCREENS, WATERMARK, BACKGROUND DESIGNS, HOLOGRAM AND OTHER SECURITY FEATURES NOT LISTED AND DO EXCEED DOCUMENT SECURITY INDUSTRY GUIDELINES.