



ELECTRONIC COPY

LG791606763
Report verification at igi.org



April 20, 2026

IGI Report Number **LG791606763**

Description **LABORATORY GROWN DIAMOND**

Shape and Cutting Style **EMERALD CUT**

Measurements **11.83 X 8.41 X 5.77 MM**

GRADING RESULTS

Carat Weight **5.58 CARATS**

Color Grade **F**

Clarity Grade **VVS 2**

April 20, 2026
IGI Report Number **LG791606763**
Description **LABORATORY GROWN DIAMOND**
Shape and Cutting Style **EMERALD CUT**
Measurements **11.83 X 8.41 X 5.77 MM**

GRADING RESULTS

Carat Weight **5.58 CARATS**

Color Grade **F**

Clarity Grade **VVS 2**

ADDITIONAL GRADING INFORMATION

Polish **EXCELLENT**

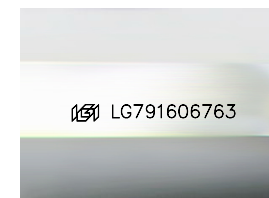
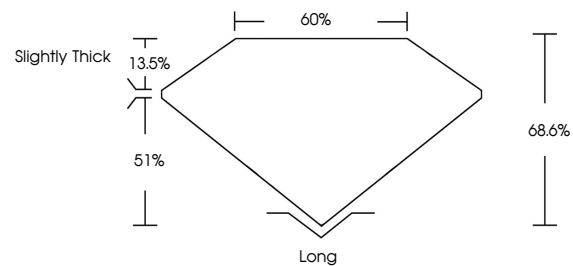
Symmetry **EXCELLENT**

Fluorescence **NONE**

Inscription(s) **IGI LG791606763**

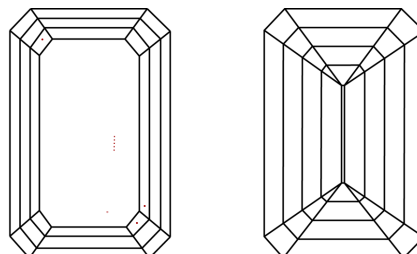
Comments: This Laboratory Grown Diamond was created by Chemical Vapor Deposition (CVD) growth process.
Type IIa

PROPORTIONS



Sample Image Used

CLARITY CHARACTERISTICS



KEY TO SYMBOLS

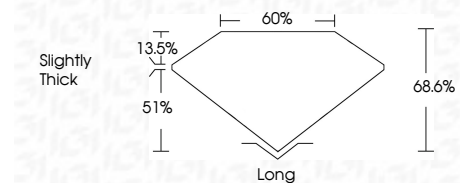
Red symbols indicate internal characteristics.
Green symbols indicate external characteristics.

COLOR

D E F G H I J Faint Very Light Light

CLARITY

FL	IF	VVS ¹⁻²	VS ¹⁻²	SI ¹⁻²	I ¹⁻³
Flawless	Internally Flawless	Very Very Slightly Included	Very Slightly Included	Slightly Included	Included



ADDITIONAL GRADING INFORMATION

Polish **EXCELLENT**

Symmetry **EXCELLENT**

Fluorescence **NONE**

Inscription(s) **IGI LG791606763**

Comments: This Laboratory Grown Diamond was created by Chemical Vapor Deposition (CVD) growth process.
Type IIa



IGI



April 20, 2026
IGI Report No **LG791606763**
EMERALD CUT
11.83 X 8.41 X 5.77 MM
5.58 CARATS
F
VVS 2
68.6%
51%
Slightly Thick
Long
EXCELLENT
EXCELLENT
NONE
IGI LG791606763
Comments: This Laboratory Grown Diamond was created by Chemical Vapor Deposition (CVD) growth process.
Type IIa