



LABORATORY GROWN DIAMOND REPORT

April 21, 2026
 IGI Report Number **LG791602617**
 Description **LABORATORY GROWN DIAMOND**
 Shape and Cutting Style **HEART BRILLIANT**
 Measurements **5.64 X 5.52 X 2.93 MM**

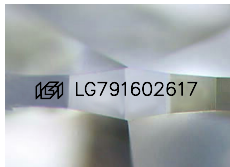
GRADING RESULTS

Carat Weight **0.51 CARAT**
 Color Grade **LIGHT YELLOW**
 Clarity Grade **VS 1**

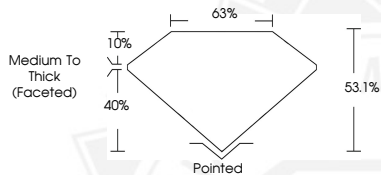
ADDITIONAL GRADING INFORMATION

Polish **VERY GOOD**
 Symmetry **VERY GOOD**
 Fluorescence **NONE**
 Inscription(s) **IGI LG791602617**

Comments: This Laboratory Grown Diamond was created by Chemical Vapor Deposition (CVD) growth process.



Sample Image Used



April 21, 2026
 IGI Report Number **LG791602617**
HEART BRILLIANT
LABORATORY GROWN DIAMOND
5.64 X 5.52 X 2.93 MM
 Carat Weight **0.51 CARAT**
 Color Grade **LIGHT YELLOW**
 Clarity Grade **VS 1**
 Polish **VERY GOOD**
 Symmetry **VERY GOOD**
 Fluorescence **NONE**
 Inscription(s) **IGI LG791602617**

Comments: This Laboratory Grown Diamond was created by Chemical Vapor Deposition (CVD) growth process.



April 21, 2026
 IGI Report Number **LG791602617**
HEART BRILLIANT
LABORATORY GROWN DIAMOND
5.64 X 5.52 X 2.93 MM
 Carat Weight **0.51 CARAT**
 Color Grade **LIGHT YELLOW**
 Clarity Grade **VS 1**
 Polish **VERY GOOD**
 Symmetry **VERY GOOD**
 Fluorescence **NONE**
 Inscription(s) **IGI LG791602617**

Comments: This Laboratory Grown Diamond was created by Chemical Vapor Deposition (CVD) growth process.



THIS DOCUMENT WAS PRODUCED WITH THE FOLLOWING SECURITY MEASURES: SPECIAL DOCUMENT PAPER, INK SCREENS, WATERMARK, BACKGROUND DESIGNS, HOLOGRAM AND OTHER SECURITY FEATURES NOT LISTED AND DO EXCEED DOCUMENT SECURITY INDUSTRY GUIDELINES.