



**ELECTRONIC COPY**

LG791601449  
Report verification at igi.org



April 22, 2026  
IGI Report Number **LG791601449**  
Description **LABORATORY GROWN DIAMOND**  
Shape and Cutting Style **HEXAGONAL MODIFIED STEP CUT**  
Measurements **13.33 X 6.93 X 4.23 MM**  
**GRADING RESULTS**  
Carat Weight **3.01 CARATS**  
Color Grade **F**  
Clarity Grade **VS 1**

**LABORATORY GROWN DIAMOND REPORT**

April 22, 2026  
IGI Report Number **LG791601449**  
Description **LABORATORY GROWN DIAMOND**  
Shape and Cutting Style **HEXAGONAL MODIFIED STEP CUT**  
Measurements **13.33 X 6.93 X 4.23 MM**

**GRADING RESULTS**

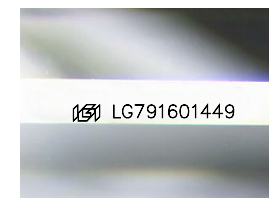
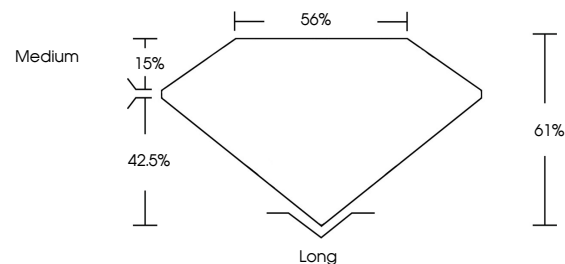
Carat Weight **3.01 CARATS**  
Color Grade **F**  
Clarity Grade **VS 1**

**ADDITIONAL GRADING INFORMATION**

Polish **EXCELLENT**  
Symmetry **EXCELLENT**  
Fluorescence **NONE**  
Inscription(s) **IGI LG791601449**

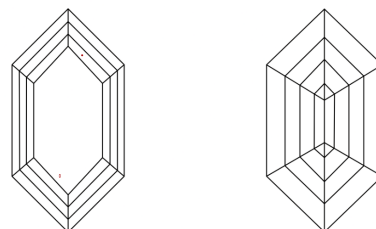
Comments: This Laboratory Grown Diamond was created by Chemical Vapor Deposition (CVD) growth process.  
Type IIa

**PROPORTIONS**



Sample Image Used

**CLARITY CHARACTERISTICS**



**KEY TO SYMBOLS**

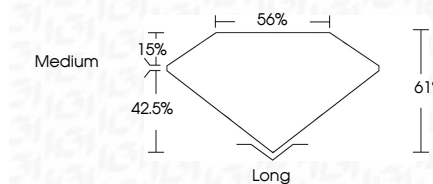
Red symbols indicate internal characteristics.  
Green symbols indicate external characteristics.

**COLOR**

D E F G H I J Faint Very Light Light

**CLARITY**

FL	IF	VS <sup>1-2</sup>	VS <sup>1-2</sup>	SI <sup>1-2</sup>	I <sup>1-3</sup>
Flawless	Internally Flawless	Very Very Slightly Included	Very Slightly Included	Slightly Included	Included



**ADDITIONAL GRADING INFORMATION**

Polish **EXCELLENT**  
Symmetry **EXCELLENT**  
Fluorescence **NONE**  
Inscription(s) **IGI LG791601449**  
Comments: This Laboratory Grown Diamond was created by Chemical Vapor Deposition (CVD) growth process.  
Type IIa



April 22, 2026  
IGI Report No LG791601449  
HEXAGONAL MODIFIED STEP CUT  
13.33 X 6.93 X 4.23 MM  
3.01 CARATS  
F  
VS 1  
61%  
56%  
Medium  
Long  
EXCELLENT  
EXCELLENT  
NONE  
IGI LG791601449  
Comments: This Laboratory Grown Diamond was created by Chemical Vapor Deposition (CVD) growth process.  
Type IIa