



**ELECTRONIC COPY**

LG791601397  
Report verification at igi.org



April 29, 2026  
IGI Report Number **LG791601397**  
Description **LABORATORY GROWN DIAMOND**  
Shape and Cutting Style **CUSHION MODIFIED BRILLIANT**  
Measurements **7.91 X 5.73 X 3.91 MM**  
**GRADING RESULTS**  
Carat Weight **1.51 CARAT**  
Color Grade **FANCY YELLOW**  
Clarity Grade **VVS 2**

**LABORATORY GROWN DIAMOND REPORT**

April 29, 2026  
IGI Report Number **LG791601397**  
Description **LABORATORY GROWN DIAMOND**  
Shape and Cutting Style **CUSHION MODIFIED BRILLIANT**  
Measurements **7.91 X 5.73 X 3.91 MM**

**GRADING RESULTS**

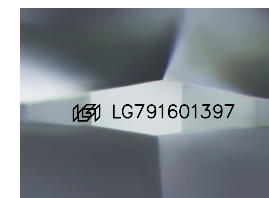
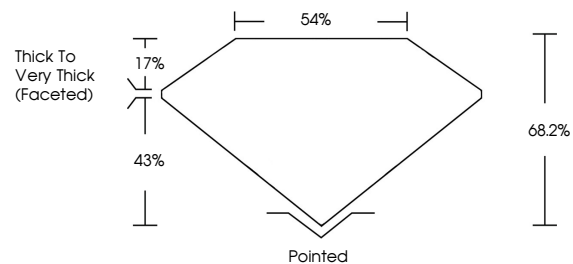
Carat Weight **1.51 CARAT**  
Color Grade **FANCY YELLOW**  
Clarity Grade **VVS 2**

**ADDITIONAL GRADING INFORMATION**

Polish **EXCELLENT**  
Symmetry **EXCELLENT**  
Fluorescence **NONE**  
Inscription(s) **IGI LG791601397**

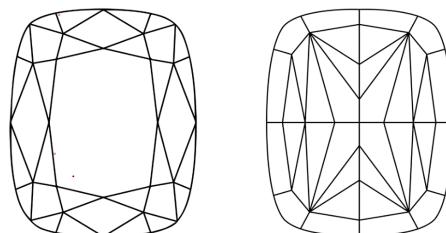
Comments: This Laboratory Grown Diamond was created by Chemical Vapor Deposition (CVD) growth process.

**PROPORTIONS**



Sample Image Used

**CLARITY CHARACTERISTICS**



**KEY TO SYMBOLS**

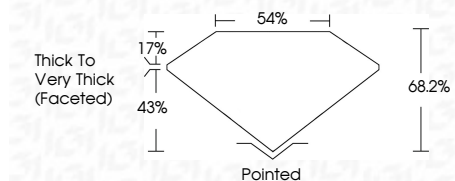
Red symbols indicate internal characteristics.  
Green symbols indicate external characteristics.

**COLOR**

D E F G H I J Faint Very Light Light

**CLARITY**

FL	IF	VVS <sup>1-2</sup>	VS <sup>1-2</sup>	SI <sup>1-2</sup>	I <sup>1-3</sup>
Flawless	Internally Flawless	Very Very Slightly Included	Very Slightly Included	Slightly Included	Included



**ADDITIONAL GRADING INFORMATION**

Polish **EXCELLENT**  
Symmetry **EXCELLENT**  
Fluorescence **NONE**  
Inscription(s) **IGI LG791601397**  
Comments: This Laboratory Grown Diamond was created by Chemical Vapor Deposition (CVD) growth process.



April 29, 2026  
IGI Report No LG791601397  
**CUSHION MODIFIED BRILLIANT**  
1.51 CARAT  
FANCY YELLOW  
VVS 2  
68.2%  
54%  
Thick to Very Thick (Faceted)  
Pointed  
EXCELLENT  
EXCELLENT  
NONE  
IGI LG791601397  
Comments: This Laboratory Grown Diamond was created by Chemical Vapor Deposition (CVD) growth process.