



ELECTRONIC COPY

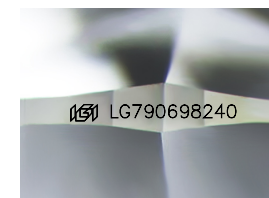
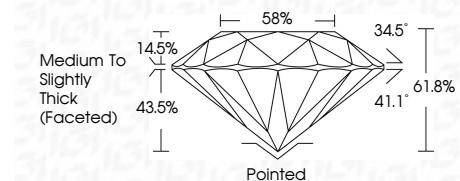
LG790698240
Report verification at igi.org



April 10, 2026
IGI Report Number LG790698240
Description LABORATORY GROWN DIAMOND
Shape and Cutting Style ROUND BRILLIANT
Measurements 8.11 - 8.14 X 5.02 MM

GRADING RESULTS

Carat Weight 2.04 CARATS
Color Grade D
Clarity Grade VVS 2
Cut Grade IDEAL



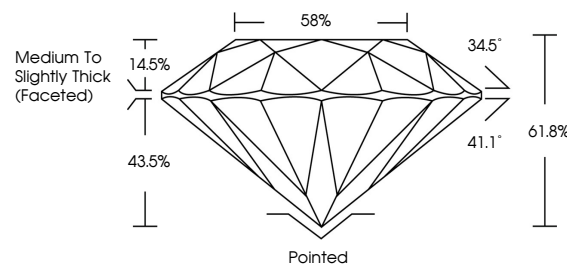
Sample Image Used

ADDITIONAL GRADING INFORMATION

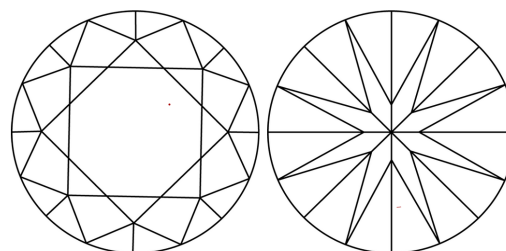
Polish EXCELLENT
Symmetry EXCELLENT
Fluorescence NONE
Inscription(s) LG790698240
Comments: This Laboratory Grown Diamond was created by Chemical Vapor Deposition (CVD) growth process. Type IIa



PROPORTIONS



CLARITY CHARACTERISTICS



KEY TO SYMBOLS

Red symbols indicate internal characteristics.
Green symbols indicate external characteristics.

COLOR

D E F G H I J Faint Very Light Light

CLARITY

FL IF VVS 1-2 VS 1-2 SI 1-2 I 1-3
Flawless Internally Flawless Very Very Slightly Included Very Slightly Included Slightly Included Included



April 10, 2026
IGI Report No LG790698240
ROUND BRILLIANT
8.11 - 8.14 X 5.02 MM
2.04 CARATS
D
VVS 2
IDEAL
61.8%
58%
Medium To Slightly Thick (Faceted)
Pointed
EXCELLENT
EXCELLENT
NONE
LG790698240
Comments: This Laboratory Grown Diamond was created by Chemical Vapor Deposition (CVD) growth process. Type IIa



April 10, 2026
IGI Report Number LG790698240
Description LABORATORY GROWN DIAMOND
Shape and Cutting Style ROUND BRILLIANT
Measurements 8.11 - 8.14 X 5.02 MM

GRADING RESULTS

Carat Weight 2.04 CARATS
Color Grade D
Clarity Grade VVS 2
Cut Grade IDEAL

ADDITIONAL GRADING INFORMATION

Polish EXCELLENT
Symmetry EXCELLENT
Fluorescence NONE
Inscription(s) LG790698240

Comments: This Laboratory Grown Diamond was created by Chemical Vapor Deposition (CVD) growth process. Type IIa

Certified SUSTAINABILITY RATED DIAMOND
SCS GLOBAL SERVICES
All certified diamonds come with an individual certificate, ONLY available at an accredited retailer
FOR THE SUSTAINABILITY RATED CERTIFICATE, SCAN HERE ->

