



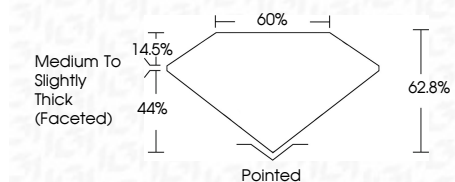
ELECTRONIC COPY

LG790696778 Report verification at igi.org



April 11, 2026 IGI Report Number LG790696778 Description LABORATORY GROWN DIAMOND Shape and Cutting Style PEAR BRILLIANT Measurements 10.62 X 6.67 X 4.19 MM

GRADING RESULTS Carat Weight 1.72 CARAT Color Grade E Clarity Grade VVS 2



ADDITIONAL GRADING INFORMATION Polish EXCELLENT Symmetry EXCELLENT Fluorescence NONE Inscription(s) IGI LG790696778 Comments: This Laboratory Grown Diamond was created by Chemical Vapor Deposition (CVD) growth process. Type IIa

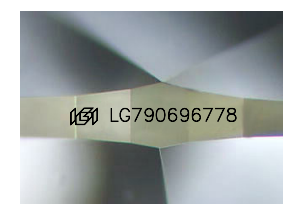
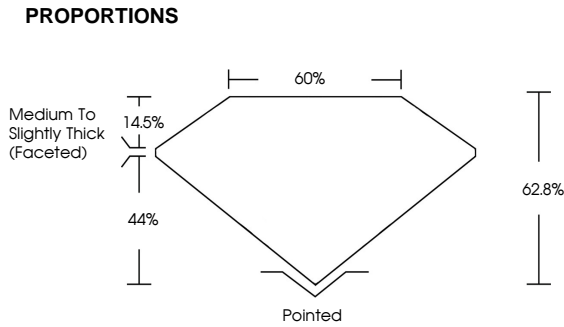


April 11, 2026 IGI Report No LG790696778 PEAR BRILLIANT 1.72 CARAT E VS 2 62.8% 60% Medium to Slightly Thick (Faceted) Pointed EXCELLENT EXCELLENT NONE NONE IGI LG790696778 Comments: This Laboratory Grown Diamond was created by Chemical Vapor Deposition (CVD) growth process. Type IIa

April 11, 2026 IGI Report Number LG790696778 Description LABORATORY GROWN DIAMOND Shape and Cutting Style PEAR BRILLIANT Measurements 10.62 X 6.67 X 4.19 MM GRADING RESULTS Carat Weight 1.72 CARAT Color Grade E Clarity Grade VVS 2

ADDITIONAL GRADING INFORMATION Polish EXCELLENT Symmetry EXCELLENT Fluorescence NONE Inscription(s) IGI LG790696778

Comments: This Laboratory Grown Diamond was created by Chemical Vapor Deposition (CVD) growth process. Type IIa



Sample Image Used

COLOR table with categories D, E, F, G, H, I, J, Faint, Very Light, Light

CLARITY table with categories FL, IF, VS 1-2, VS 1-2, SI 1-2, I 1-3

