



ELECTRONIC COPY

LG790695474
Report verification at igi.org



April 17, 2026
IGI Report Number **LG790695474**
Description **LABORATORY GROWN DIAMOND**
Shape and Cutting Style **ROUND BRILLIANT**
Measurements **6.53 - 6.57 X 4.05 MM**
GRADING RESULTS
Carat Weight **1.09 CARAT**
Color Grade **F**
Clarity Grade **VVS 2**
Cut Grade **IDEAL**

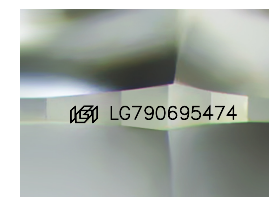
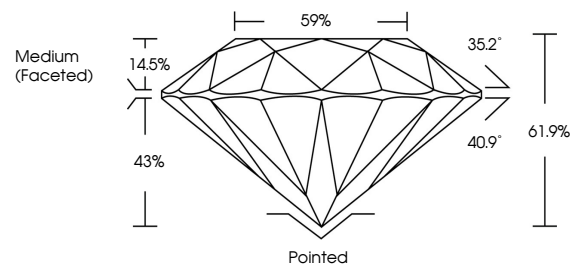
April 17, 2026
IGI Report Number **LG790695474**
Description **LABORATORY GROWN DIAMOND**
Shape and Cutting Style **ROUND BRILLIANT**
Measurements **6.53 - 6.57 X 4.05 MM**
GRADING RESULTS
Carat Weight **1.09 CARAT**
Color Grade **F**
Clarity Grade **VVS 2**
Cut Grade **IDEAL**

ADDITIONAL GRADING INFORMATION

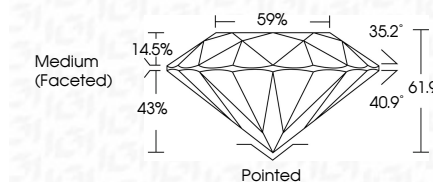
Polish **EXCELLENT**
Symmetry **EXCELLENT**
Fluorescence **NONE**
Inscription(s) **IGI LG790695474**

Comments: This Laboratory Grown Diamond was created by Chemical Vapor Deposition (CVD) growth process.
Type IIa

PROPORTIONS



Sample Image Used



COLOR

D E F G H I J Faint Very Light Light

CLARITY

FL	IF	VVS ¹⁻²	VS ¹⁻²	SI ¹⁻²	I ¹⁻³
Flawless	Internally Flawless	Very Very Slightly Included	Very Slightly Included	Slightly Included	Included

ADDITIONAL GRADING INFORMATION

Polish **EXCELLENT**
Symmetry **EXCELLENT**
Fluorescence **NONE**
Inscription(s) **IGI LG790695474**
Comments: This Laboratory Grown Diamond was created by Chemical Vapor Deposition (CVD) growth process.
Type IIa



IGI



April 17, 2026
IGI Report No **LG790695474**
ROUND BRILLIANT
6.53 - 6.57 X 4.05 MM
Carat Weight **1.09 CARAT**
Color Grade **F**
Clarity Grade **VVS 2**
Depth **IDEAL**
Table **61.5%**
Girdle **43%**
Medium (Faceted)
Culet **Pointed**
Polish **EXCELLENT**
Symmetry **EXCELLENT**
Fluorescence **NONE**
Inscriptions(s) **IGI LG790695474**
Comments: This Laboratory Grown Diamond was created by Chemical Vapor Deposition (CVD) growth process.
Type IIa