



ELECTRONIC COPY

LG790692953
Report verification at igi.org



May 12, 2026
IGI Report Number **LG790692953**
Description **LABORATORY GROWN DIAMOND**
Shape and Cutting Style **CUT CORNERED
RECTANGULAR MODIFIED
BRILLIANT**
Measurements **9.96 X 7.62 X 5.11 MM**
GRADING RESULTS
Carat Weight **3.55 CARATS**
Color Grade **FANCY VIVID BROWNISH
YELLOW**
Clarity Grade **VS 2**

May 12, 2026
IGI Report Number **LG790692953**
Description **LABORATORY GROWN DIAMOND**
Shape and Cutting Style **CUT CORNERED RECTANGULAR
MODIFIED BRILLIANT**
Measurements **9.96 X 7.62 X 5.11 MM**

GRADING RESULTS

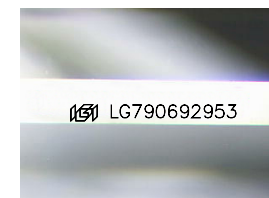
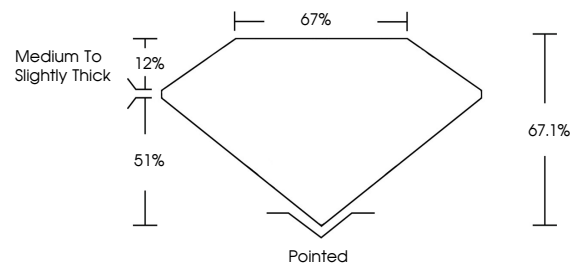
Carat Weight **3.55 CARATS**
Color Grade **FANCY VIVID BROWNISH
YELLOW**
Clarity Grade **VS 2**

ADDITIONAL GRADING INFORMATION

Polish **EXCELLENT**
Symmetry **EXCELLENT**
Fluorescence **NONE**
Inscription(s) **IGI LG790692953**

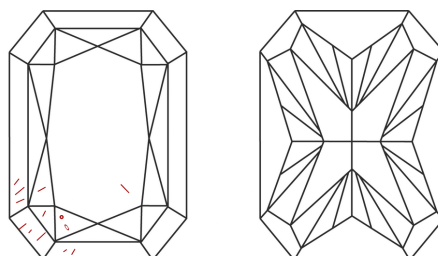
Comments: As Grown - No indication of post-growth treatment.
This Laboratory Grown Diamond was created by High Pressure High Temperature (HPHT) growth process.

PROPORTIONS



Sample Image Used

CLARITY CHARACTERISTICS



KEY TO SYMBOLS

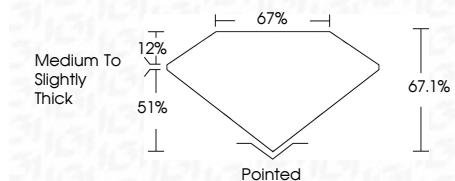
Red symbols indicate internal characteristics.
Green symbols indicate external characteristics.

COLOR

D E F G H I J Faint Very Light Light

CLARITY

FL	IF	VS ¹⁻²	VS ¹⁻²	SI ¹⁻²	I ¹⁻³
Flawless	Internally Flawless	Very Very Slightly Included	Very Slightly Included	Slightly Included	Included



ADDITIONAL GRADING INFORMATION

Polish **EXCELLENT**
Symmetry **EXCELLENT**
Fluorescence **NONE**
Inscription(s) **IGI LG790692953**
Comments: As Grown - No indication of post-growth treatment.
This Laboratory Grown Diamond was created by High Pressure High Temperature (HPHT) growth process.



IGI



May 12, 2026
IGI Report No. LG790692953
CUT CORNERED RECT. MODIFIED BRILLIANT
3.55 CARATS
Carat Weight
FANCY VIVID BROWNISH YELLOW
Color Grade
VS 2
Clarity Grade
67.1%
67%
Medium to Slightly Thick
Pointed
Polish EXCELLENT
Symmetry EXCELLENT
Fluorescence NONE
Inscription(s) IGI LG790692953

Comments: As Grown - No indication of post-growth treatment.
This Laboratory Grown Diamond was created by High Pressure High Temperature (HPHT) growth process.