



**ELECTRONIC COPY**

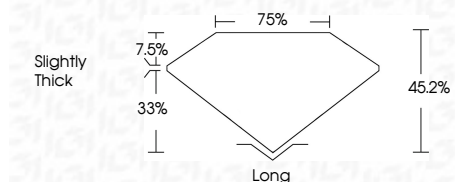
LG790692695  
Report verification at [igi.org](http://igi.org)



April 28, 2026  
IGI Report Number **LG790692695**  
Description **LABORATORY GROWN DIAMOND**  
Shape and Cutting Style **TAPERED BAGUETTE**  
Measurements **7.66 X 5.98 X 2.70 MM**

**GRADING RESULTS**

Carat Weight **1.00 CARAT**  
Color Grade **D**  
Clarity Grade **VS 1**



**ADDITIONAL GRADING INFORMATION**

Polish **EXCELLENT**  
Symmetry **EXCELLENT**  
Fluorescence **NONE**  
Inscription(s) **IGI LG790692695**  
Comments: This Laboratory Grown Diamond was created by Chemical Vapor Deposition (CVD) growth process. Type IIa



April 28, 2026  
IGI Report No LG790692695  
**TAPERED BAGUETTE**  
7.66 X 5.98 X 2.70 MM  
1.00 CARAT  
D  
VS 1  
45.2%  
75%  
Slightly Thick  
Long  
EXCELLENT  
EXCELLENT  
NONE  
IGI LG790692695  
Comments: This Laboratory Grown Diamond was created by Chemical Vapor Deposition (CVD) growth process. Type IIa

**LABORATORY GROWN DIAMOND REPORT**

April 28, 2026  
IGI Report Number **LG790692695**  
Description **LABORATORY GROWN DIAMOND**  
Shape and Cutting Style **TAPERED BAGUETTE**  
Measurements **7.66 X 5.98 X 2.70 MM**

**GRADING RESULTS**

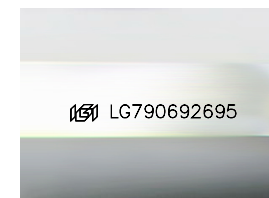
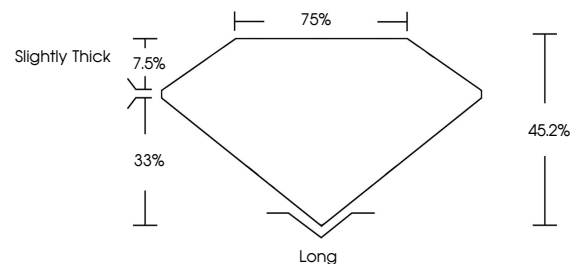
Carat Weight **1.00 CARAT**  
Color Grade **D**  
Clarity Grade **VS 1**

**ADDITIONAL GRADING INFORMATION**

Polish **EXCELLENT**  
Symmetry **EXCELLENT**  
Fluorescence **NONE**  
Inscription(s) **IGI LG790692695**

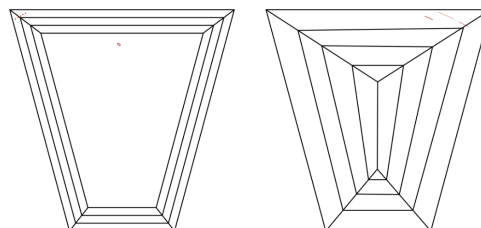
Comments: This Laboratory Grown Diamond was created by Chemical Vapor Deposition (CVD) growth process. Type IIa

**PROPORTIONS**



Sample Image Used

**CLARITY CHARACTERISTICS**



**KEY TO SYMBOLS**

Red symbols indicate internal characteristics.  
Green symbols indicate external characteristics.

**COLOR**

D E F G H I J Faint Very Light Light

**CLARITY**

FL	IF	VS <sup>1-2</sup>	VS <sup>1-2</sup>	SI <sup>1-2</sup>	I <sup>1-3</sup>
Flawless	Internally Flawless	Very Very Slightly Included	Very Slightly Included	Slightly Included	Included

