



ELECTRONIC COPY

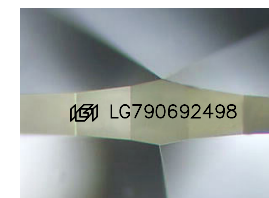
LG790692498
Report verification at igi.org



April 20, 2026
IGI Report Number **LG790692498**
Description **LABORATORY GROWN DIAMOND**

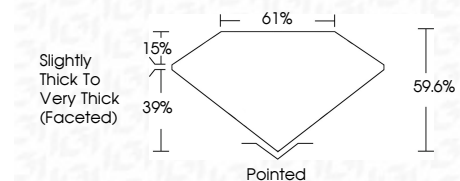
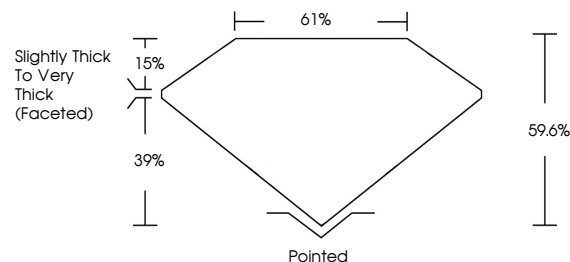
Shape and Cutting Style **PEAR MODIFIED BRILLIANT**
Measurements **14.29 X 9.28 X 5.53 MM**

GRADING RESULTS
Carat Weight **5.08 CARATS**
Color Grade **FANCY INTENSE YELLOW**
Clarity Grade **VS 1**

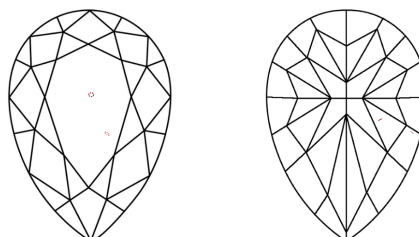


Sample Image Used

PROPORTIONS



CLARITY CHARACTERISTICS



KEY TO SYMBOLS

Red symbols indicate internal characteristics.
Green symbols indicate external characteristics.

COLOR

D E F G H I J Faint Very Light Light

CLARITY

FL	IF	VS ¹⁻²	VS ¹⁻²	SI ¹⁻²	I ¹⁻³
Flawless	Internally Flawless	Very Very Slightly Included	Very Slightly Included	Slightly Included	Included

ADDITIONAL GRADING INFORMATION

Polish **EXCELLENT**
Symmetry **EXCELLENT**
Fluorescence **NONE**
Inscription(s) **IGI LG790692498**
Comments: This Laboratory Grown Diamond was created by Chemical Vapor Deposition (CVD) growth process.



IGI



April 20, 2026
IGI Report No LG790692498
PEAR MODIFIED BRILLIANT
14.29 X 9.28 X 5.53 MM
5.08 CARATS
FANCY INTENSE YELLOW
VS 1
61%
59.6%
Slightly Thick To Very Thick (Faceted)
Pointed
EXCELLENT
EXCELLENT
NONE
IGI LG790692498
Comments: This Laboratory Grown Diamond was created by Chemical Vapor Deposition (CVD) growth process.