



ELECTRONIC COPY

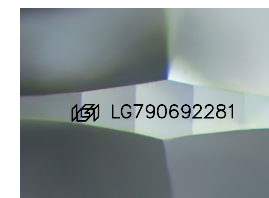
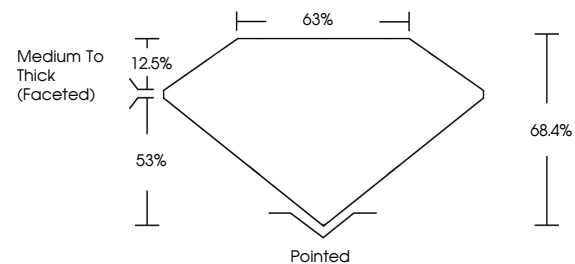
LG790692281
Report verification at igi.org



April 13, 2026
IGI Report Number **LG790692281**
Description **LABORATORY GROWN DIAMOND**
Shape and Cutting Style **CUSHION MODIFIED BRILLIANT**
Measurements **10.15 X 7.41 X 5.07 MM**
GRADING RESULTS
Carat Weight **3.02 CARATS**
Color Grade **F**
Clarity Grade **VS 2**

April 13, 2026
IGI Report Number **LG790692281**
Description **LABORATORY GROWN DIAMOND**
Shape and Cutting Style **CUSHION MODIFIED BRILLIANT**
Measurements **10.15 X 7.41 X 5.07 MM**

PROPORTIONS

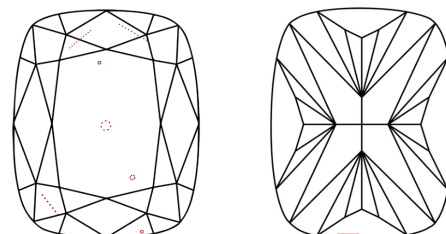


Sample Image Used

GRADING RESULTS

Carat Weight **3.02 CARATS**
Color Grade **F**
Clarity Grade **VS 2**

CLARITY CHARACTERISTICS



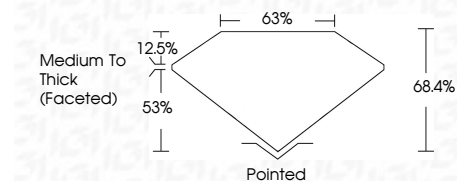
KEY TO SYMBOLS

Red symbols indicate internal characteristics.
Green symbols indicate external characteristics.

ADDITIONAL GRADING INFORMATION

Polish **EXCELLENT**
Symmetry **EXCELLENT**
Fluorescence **NONE**
Inscription(s) **IGI LG790692281**

Comments: This Laboratory Grown Diamond was created by Chemical Vapor Deposition (CVD) growth process. Type IIa



COLOR

D E F G H I J Faint Very Light Light

CLARITY

FL	IF	VS ¹⁻²	VS ¹⁻²	SI ¹⁻²	I ¹⁻³
Flawless	Internally Flawless	Very Very Slightly Included	Very Slightly Included	Slightly Included	Included

ADDITIONAL GRADING INFORMATION

Polish **EXCELLENT**
Symmetry **EXCELLENT**
Fluorescence **NONE**
Inscription(s) **IGI LG790692281**
Comments: This Laboratory Grown Diamond was created by Chemical Vapor Deposition (CVD) growth process. Type IIa



April 13, 2026
IGI Report No LG790692281
CUSHION MODIFIED BRILLIANT
3.02 CARATS
F
3.02 CARATS
F
VS 2
68.4%
53%
Medium To Thick (Faceted)
Pointed
EXCELLENT
EXCELLENT
NONE
IGI LG790692281
Comments: This Laboratory Grown Diamond was created by Chemical Vapor Deposition (CVD) growth process. Type IIa