



ELECTRONIC COPY

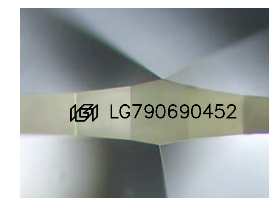
LG790690452
Report verification at igi.org



April 16, 2026
IGI Report Number **LG790690452**
Description **LABORATORY GROWN DIAMOND**

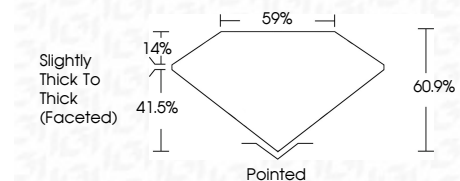
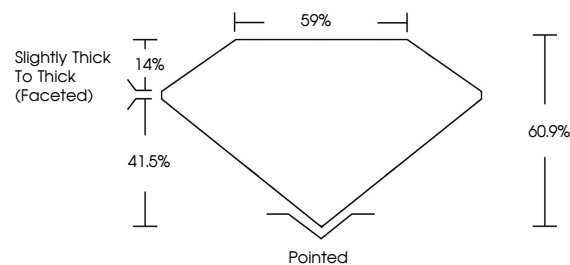
Shape and Cutting Style **PEAR MODIFIED BRILLIANT**
Measurements **11.77 X 7.29 X 4.44 MM**

GRADING RESULTS
Carat Weight **2.67 CARATS**
Color Grade **FANCY INTENSE YELLOW**
Clarity Grade **VS 1**

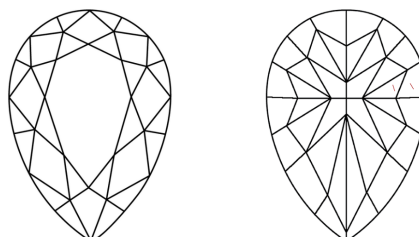


Sample Image Used

PROPORTIONS



CLARITY CHARACTERISTICS



KEY TO SYMBOLS

Red symbols indicate internal characteristics.
Green symbols indicate external characteristics.

COLOR

D E F G H I J Faint Very Light Light

CLARITY

FL	IF	VS ¹⁻²	VS ¹⁻²	SI ¹⁻²	I ¹⁻³
Flawless	Internally Flawless	Very Very Slightly Included	Very Slightly Included	Slightly Included	Included

ADDITIONAL GRADING INFORMATION

Polish **EXCELLENT**
Symmetry **EXCELLENT**
Fluorescence **NONE**
Inscription(s) **IGI LG790690452**
Comments: This Laboratory Grown Diamond was created by Chemical Vapor Deposition (CVD) growth process.



April 16, 2026
IGI Report No **LG790690452**
PEAR MODIFIED BRILLIANT
11.77 X 7.29 X 4.44 MM
Carat Weight **2.67 CARATS**
Color Grade **FANCY INTENSE YELLOW**
Clarity Grade **VS 1**
Depth **60.9%**
Table **59%**
Girdle **Slightly Thick To Thick (Faceted)**
Culet **Pointed**
Polish **EXCELLENT**
Symmetry **EXCELLENT**
Fluorescence **NONE**
Inscription(s) **IGI LG790690452**
Comments: This Laboratory Grown Diamond was created by Chemical Vapor Deposition (CVD) growth process.