



ELECTRONIC COPY

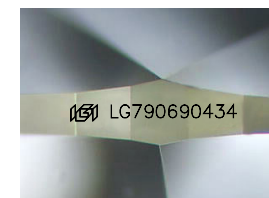
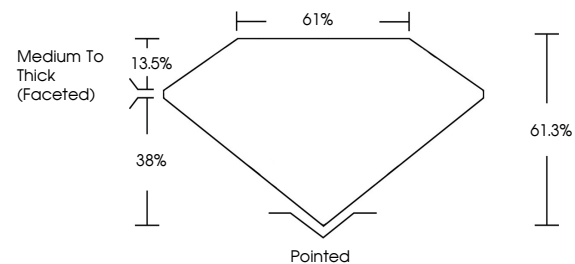
LG790690434
Report verification at igi.org



April 16, 2026
IGI Report Number **LG790690434**
Description **LABORATORY GROWN DIAMOND**
Shape and Cutting Style **MARQUISE MODIFIED BRILLIANT**
Measurements **11.85 X 5.56 X 3.41 MM**
GRADING RESULTS
Carat Weight **1.44 CARAT**
Color Grade **FANCY VIVID PINK**
Clarity Grade **VS 2**

April 16, 2026
IGI Report Number **LG790690434**
Description **LABORATORY GROWN DIAMOND**
Shape and Cutting Style **MARQUISE MODIFIED BRILLIANT**
Measurements **11.85 X 5.56 X 3.41 MM**

PROPORTIONS

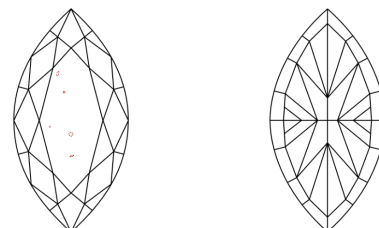


Sample Image Used

GRADING RESULTS

Carat Weight **1.44 CARAT**
Color Grade **FANCY VIVID PINK**
Clarity Grade **VS 2**

CLARITY CHARACTERISTICS



KEY TO SYMBOLS

Red symbols indicate internal characteristics.
Green symbols indicate external characteristics.

ADDITIONAL GRADING INFORMATION

Polish **EXCELLENT**
Symmetry **VERY GOOD**
Fluorescence **SLIGHT**
Inscription(s) **IGI LG790690434**

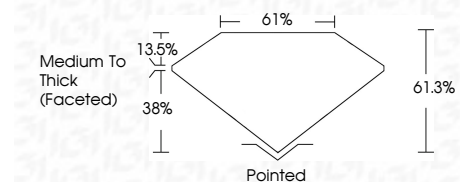
Comments: This Laboratory Grown Diamond was created by Chemical Vapor Deposition (CVD) growth process.
Indications of post-growth treatment.

COLOR

D E F G H I J Faint Very Light Light

CLARITY

FL	IF	VS ¹⁻²	VS ¹⁻²	SI ¹⁻²	I ¹⁻³
Flawless	Internally Flawless	Very Very Slightly Included	Very Slightly Included	Slightly Included	Included



ADDITIONAL GRADING INFORMATION

Polish **EXCELLENT**
Symmetry **VERY GOOD**
Fluorescence **SLIGHT**
Inscription(s) **IGI LG790690434**
Comments: This Laboratory Grown Diamond was created by Chemical Vapor Deposition (CVD) growth process.
Indications of post-growth treatment.



April 16, 2026
IGI Report No **LG790690434**
MARQUISE MODIFIED BRILLIANT
1.44 CARAT
Carat Weight **FANCY VIVID PINK**
Color Grade **VS 2**
Depth **61.3%**
Table **61%**
Girdle **Medium To Thick (Faceted)**
Culet **Pointed**
Polish **EXCELLENT**
Symmetry **VERY GOOD**
Fluorescence **SLIGHT**
Inscription(s) **IGI LG790690434**
Comments: This Laboratory Grown Diamond was created by Chemical Vapor Deposition (CVD) growth process.
Indications of post-growth treatment.