



ELECTRONIC COPY

LG790690431
Report verification at igi.org



April 16, 2026

IGI Report Number **LG790690431**

Description **LABORATORY GROWN DIAMOND**

Shape and Cutting Style **OVAL MODIFIED BRILLIANT**

Measurements **8.38 X 5.62 X 3.27 MM**

GRADING RESULTS

Carat Weight **1.13 CARAT**

Color Grade **FANCY VIVID PINK**

Clarity Grade **VVS 2**

April 16, 2026

IGI Report Number **LG790690431**

Description **LABORATORY GROWN DIAMOND**

Shape and Cutting Style **OVAL MODIFIED BRILLIANT**

Measurements **8.38 X 5.62 X 3.27 MM**

GRADING RESULTS

Carat Weight **1.13 CARAT**

Color Grade **FANCY VIVID PINK**

Clarity Grade **VVS 2**

ADDITIONAL GRADING INFORMATION

Polish **EXCELLENT**

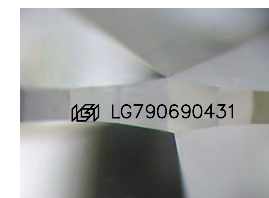
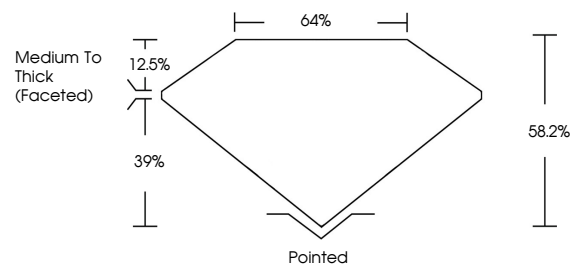
Symmetry **EXCELLENT**

Fluorescence **SLIGHT**

Inscription(s) **LG790690431**

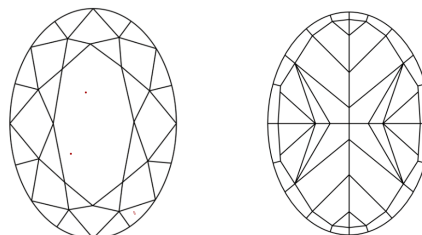
Comments: This Laboratory Grown Diamond was created by Chemical Vapor Deposition (CVD) growth process. Indications of post-growth treatment.

PROPORTIONS



Sample Image Used

CLARITY CHARACTERISTICS



KEY TO SYMBOLS

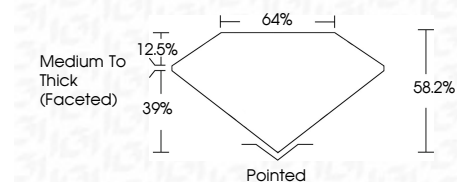
Red symbols indicate internal characteristics.
Green symbols indicate external characteristics.

COLOR

D E F G H I J Faint Very Light Light

CLARITY

FL	IF	VVS ¹⁻²	VS ¹⁻²	SI ¹⁻²	I ¹⁻³
Flawless	Internally Flawless	Very Very Slightly Included	Very Slightly Included	Slightly Included	Included



ADDITIONAL GRADING INFORMATION

Polish **EXCELLENT**

Symmetry **EXCELLENT**

Fluorescence **SLIGHT**

Inscription(s) **LG790690431**

Comments: This Laboratory Grown Diamond was created by Chemical Vapor Deposition (CVD) growth process. Indications of post-growth treatment.



April 16, 2026
IGI Report No **LG790690431**
OVAL MODIFIED BRILLIANT
8.38 X 5.62 X 3.27 MM
1.13 CARAT
FANCY VIVID PINK
VVS 2
58.2%
39%
12.5%
64%
Pointed
Medium To Thick (Faceted)
EXCELLENT
EXCELLENT
SLIGHT
IGI LG790690431

Comments: This Laboratory Grown Diamond was created by Chemical Vapor Deposition (CVD) growth process. Indications of post-growth treatment.