



ELECTRONIC COPY

LG790690395
Report verification at igi.org



April 16, 2026
IGI Report Number LG790690395
Description LABORATORY GROWN DIAMOND
Shape and Cutting Style CUT CORNERED RECTANGULAR MODIFIED BRILLIANT
Measurements 10.47 X 7.19 X 5.06 MM
GRADING RESULTS
Carat Weight 3.65 CARATS
Color Grade FANCY INTENSE YELLOW
Clarity Grade VVS 2

LABORATORY GROWN DIAMOND REPORT

April 16, 2026
IGI Report Number LG790690395
Description LABORATORY GROWN DIAMOND
Shape and Cutting Style CUT CORNERED RECTANGULAR MODIFIED BRILLIANT
Measurements 10.47 X 7.19 X 5.06 MM

GRADING RESULTS

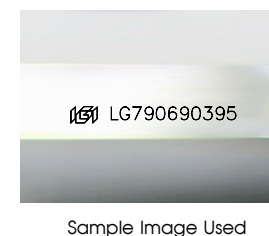
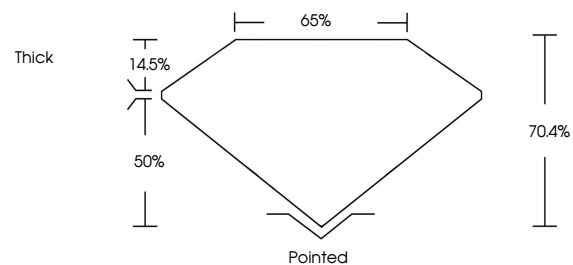
Carat Weight 3.65 CARATS
Color Grade FANCY INTENSE YELLOW
Clarity Grade VVS 2

ADDITIONAL GRADING INFORMATION

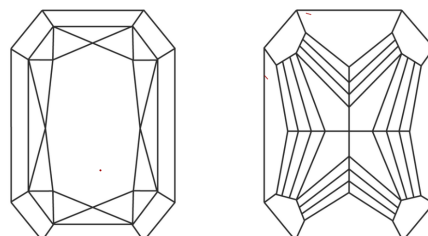
Polish EXCELLENT
Symmetry EXCELLENT
Fluorescence NONE
Inscription(s) IGI LG790690395

Comments: This Laboratory Grown Diamond was created by Chemical Vapor Deposition (CVD) growth process.

PROPORTIONS



CLARITY CHARACTERISTICS



KEY TO SYMBOLS

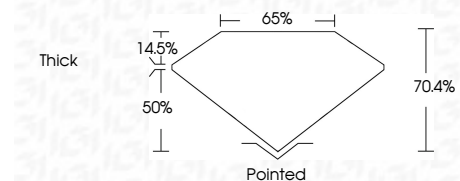
Red symbols indicate internal characteristics.
Green symbols indicate external characteristics.

COLOR

D E F G H I J Faint Very Light Light

CLARITY

FL IF VVS 1-2 VS 1-2 SI 1-2 I 1-3
Flawless Internally Flawless Very Very Slightly Included Very Slightly Included Slightly Included Included



ADDITIONAL GRADING INFORMATION

Polish EXCELLENT
Symmetry EXCELLENT
Fluorescence NONE
Inscription(s) IGI LG790690395
Comments: This Laboratory Grown Diamond was created by Chemical Vapor Deposition (CVD) growth process.



April 16, 2026
IGI Report No LG790690395
CUT CORNERED RECT. MODIFIED BRILLIANT
10.47 X 7.19 X 5.06 MM
3.65 CARATS
FANCY INTENSE YELLOW
VVS 2
70.4%
65%
Thick
Pointed
EXCELLENT
EXCELLENT
NONE
IGI LG790690395
Comments: This Laboratory Grown Diamond was created by Chemical Vapor Deposition (CVD) growth process.