



ELECTRONIC COPY

LG790690109 Report verification at igi.org



April 11, 2026

IGI Report Number LG790690109

Description LABORATORY GROWN DIAMOND

Shape and Cutting Style OVAL BRILLIANT

Measurements 12.12 X 8.12 X 5.04 MM

GRADING RESULTS

Carat Weight 3.08 CARATS

Color Grade D

Clarity Grade VS 1

April 11, 2026
IGI Report Number LG790690109
Description LABORATORY GROWN DIAMOND
Shape and Cutting Style OVAL BRILLIANT
Measurements 12.12 X 8.12 X 5.04 MM

GRADING RESULTS

Carat Weight 3.08 CARATS

Color Grade D

Clarity Grade VS 1

ADDITIONAL GRADING INFORMATION

Polish EXCELLENT

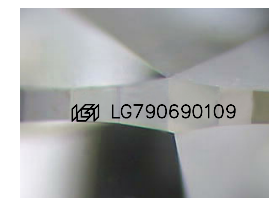
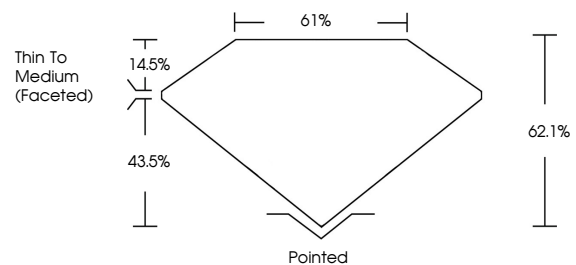
Symmetry EXCELLENT

Fluorescence NONE

Inscription(s) IGI LG790690109

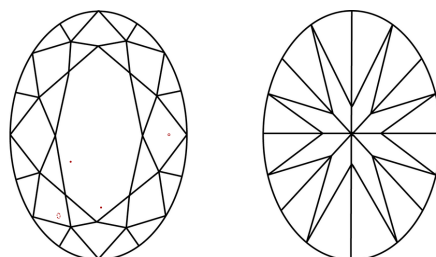
Comments: This Laboratory Grown Diamond was created by Chemical Vapor Deposition (CVD) growth process. Type IIa

PROPORTIONS



Sample Image Used

CLARITY CHARACTERISTICS



KEY TO SYMBOLS

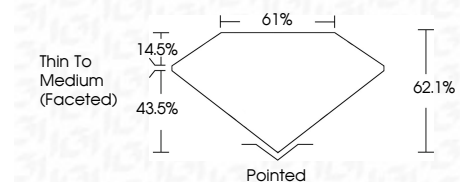
Red symbols indicate internal characteristics. Green symbols indicate external characteristics.

COLOR

D E F G H I J Faint Very Light Light

CLARITY

FL IF VS 1-2 VS 2-3 SI 1-2 I 1-3
Flawless Internally Flawless Very Very Slightly Included Very Slightly Included Slightly Included Included



ADDITIONAL GRADING INFORMATION

Polish EXCELLENT

Symmetry EXCELLENT

Fluorescence NONE

Inscription(s) IGI LG790690109

Comments: This Laboratory Grown Diamond was created by Chemical Vapor Deposition (CVD) growth process. Type IIa



IGI



Vertical text block containing report details: April 11, 2026, IGI Report No LG790690109, OVAL BRILLIANT, 3.08 CARATS, D, 12.12 X 8.12 X 5.04 MM, VS 1, 62.1%, 61%, Thin To Medium (Faceted), Pointed, EXCELLENT, EXCELLENT, NONE, IGI LG790690109. Includes a comment about the CVD growth process.