



**ELECTRONIC COPY**

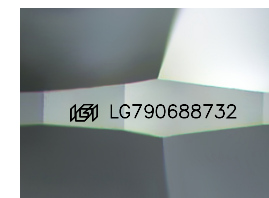
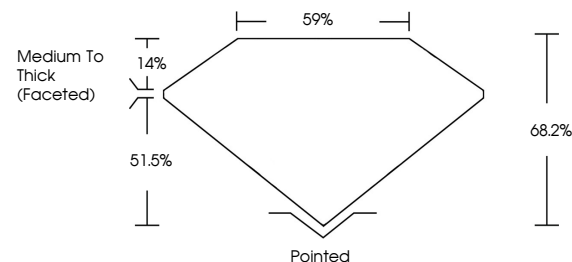
LG790688732  
Report verification at igi.org



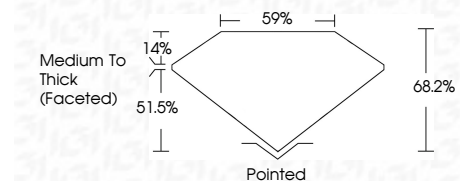
April 9, 2026  
IGI Report Number **LG790688732**  
Description **LABORATORY GROWN DIAMOND**  
Shape and Cutting Style **CUSHION MODIFIED BRILLIANT**  
Measurements **9.46 X 7.10 X 4.84 MM**  
**GRADING RESULTS**  
Carat Weight **2.54 CARATS**  
Color Grade **D**  
Clarity Grade **VVS 2**

April 9, 2026  
IGI Report Number **LG790688732**  
Description **LABORATORY GROWN DIAMOND**  
Shape and Cutting Style **CUSHION MODIFIED BRILLIANT**  
Measurements **9.46 X 7.10 X 4.84 MM**

**PROPORTIONS**



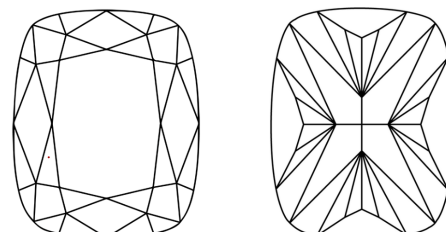
Sample Image Used



**GRADING RESULTS**

Carat Weight **2.54 CARATS**  
Color Grade **D**  
Clarity Grade **VVS 2**

**CLARITY CHARACTERISTICS**



**KEY TO SYMBOLS**

Red symbols indicate internal characteristics.  
Green symbols indicate external characteristics.

**COLOR**

D E F G H I J Faint Very Light Light

**CLARITY**

FL	IF	VVS <sup>1-2</sup>	VS <sup>1-2</sup>	SI <sup>1-2</sup>	I <sup>1-3</sup>
Flawless	Internally Flawless	Very Very Slightly Included	Very Slightly Included	Slightly Included	Included

**ADDITIONAL GRADING INFORMATION**

Polish **EXCELLENT**  
Symmetry **EXCELLENT**  
Fluorescence **NONE**  
Inscription(s) **IGI LG790688732**  
Comments: This Laboratory Grown Diamond was created by Chemical Vapor Deposition (CVD) growth process.  
Type IIa

**ADDITIONAL GRADING INFORMATION**

Polish **EXCELLENT**  
Symmetry **EXCELLENT**  
Fluorescence **NONE**  
Inscription(s) **IGI LG790688732**

Comments: This Laboratory Grown Diamond was created by Chemical Vapor Deposition (CVD) growth process.  
Type IIa



**IGI**



April 9, 2026  
IGI Report No **LG790688732**  
**CUSHION MODIFIED BRILLIANT**  
**9.46 X 7.10 X 4.84 MM**  
2.54 CARATS  
D  
2.54 CARATS  
D  
VVS 2  
68.2%  
59%  
Medium To Thick (Faceted)  
Pointed  
EXCELLENT  
EXCELLENT  
NONE  
IGI LG790688732

Comments: This Laboratory Grown Diamond was created by Chemical Vapor Deposition (CVD) growth process.  
Type IIa