



April 13, 2026

IGI Report Number **LG790686688**

OVAL BRILLIANT

LABORATORY GROWN DIAMOND

7.06 X 5.09 X 2.98 MM

Carat Weight **0.70 CARAT**

Color Grade **FANCY VIVID GREEN**

Clarity Grade **VS 1**

Polish **VERY GOOD**

Symmetry **VERY GOOD**

Fluorescence **NONE**

Inscription(s) **IGI LG790686688**

Comments: This Laboratory Grown Diamond was created by High Pressure High Temperature (HPHT) growth process. Indications of post-growth treatment.

LABORATORY GROWN DIAMOND REPORT

April 13, 2026

IGI Report Number

LG790686688

Description

LABORATORY GROWN DIAMOND

Shape and Cutting Style

OVAL BRILLIANT

Measurements

7.06 X 5.09 X 2.98 MM

GRADING RESULTS

Carat Weight

0.70 CARAT

Color Grade

FANCY VIVID GREEN

Clarity Grade

VS 1

ADDITIONAL GRADING INFORMATION

Polish

VERY GOOD

Symmetry

VERY GOOD

Fluorescence

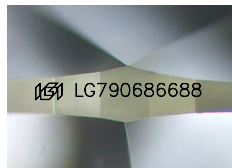
NONE

Inscription(s)

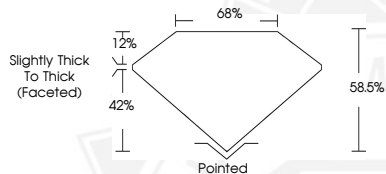
IGI LG790686688

Comments: This Laboratory Grown Diamond was created by High Pressure High Temperature (HPHT) growth process.

Indications of post-growth treatment.



Sample Image Used



April 13, 2026

IGI Report Number **LG790686688**

OVAL BRILLIANT

LABORATORY GROWN DIAMOND

7.06 X 5.09 X 2.98 MM

Carat Weight **0.70 CARAT**

Color Grade **FANCY VIVID GREEN**

Clarity Grade **VS 1**

Polish **VERY GOOD**

Symmetry **VERY GOOD**

Fluorescence **NONE**

Inscription(s) **IGI LG790686688**

Comments: This Laboratory Grown Diamond was created by High Pressure High Temperature (HPHT) growth process. Indications of post-growth treatment.



THIS DOCUMENT WAS PRODUCED WITH THE FOLLOWING SECURITY MEASURES: SPECIAL DOCUMENT PAPER, INK SCREENS, WATERMARK, BACKGROUND DESIGNS, HOLOGRAM AND OTHER SECURITY FEATURES NOT LISTED AND DO EXCEED DOCUMENT SECURITY INDUSTRY GUIDELINES.