



**ELECTRONIC COPY**

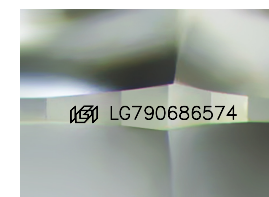
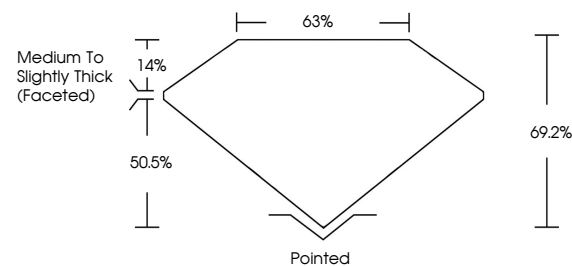
LG790686574  
Report verification at [igi.org](http://igi.org)



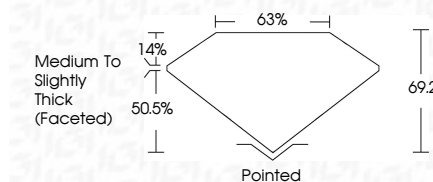
April 18, 2026  
IGI Report Number **LG790686574**  
Description **LABORATORY GROWN DIAMOND**  
Shape and Cutting Style **CUSHION MODIFIED BRILLIANT**  
Measurements **9.80 X 7.46 X 5.16 MM**  
**GRADING RESULTS**  
Carat Weight **3.03 CARATS**  
Color Grade **FANCY VIVID BLUE**  
Clarity Grade **VS 1**

April 18, 2026  
IGI Report Number **LG790686574**  
Description **LABORATORY GROWN DIAMOND**  
Shape and Cutting Style **CUSHION MODIFIED BRILLIANT**  
Measurements **9.80 X 7.46 X 5.16 MM**  
**GRADING RESULTS**  
Carat Weight **3.03 CARATS**  
Color Grade **FANCY VIVID BLUE**  
Clarity Grade **VS 1**

**PROPORTIONS**



Sample Image Used



**ADDITIONAL GRADING INFORMATION**

Polish **EXCELLENT**  
Symmetry **EXCELLENT**  
Fluorescence **NONE**  
Inscription(s) **IGI LG790686574**

Comments: This Laboratory Grown Diamond was created by Chemical Vapor Deposition (CVD) growth process. Indications of post-growth treatment.

**ADDITIONAL GRADING INFORMATION**

Polish **EXCELLENT**  
Symmetry **EXCELLENT**  
Fluorescence **NONE**  
Inscription(s) **IGI LG790686574**  
Comments: This Laboratory Grown Diamond was created by Chemical Vapor Deposition (CVD) growth process. Indications of post-growth treatment.

**COLOR**

D E F G H I J Faint Very Light Light

**CLARITY**

FL	IF	VS <sup>1-2</sup>	VS <sup>1-2</sup>	SI <sup>1-2</sup>	I <sup>1-3</sup>
Flawless	Internally Flawless	Very Very Slightly Included	Very Slightly Included	Slightly Included	Included



**IGI**



April 18, 2026  
IGI Report No **LG790686574**  
**CUSHION MODIFIED BRILLIANT**

**3.03 CARATS**  
Carat Weight  
**FANCY VIVID BLUE**  
Color Grade  
**VS 1**  
Clarity Grade  
**69.2%**  
Depth  
**63%**  
Table  
**Medium to Slightly Thick (Faceted)**  
Girdle  
**Pointed**  
Culet  
**EXCELLENT**  
Polish  
**EXCELLENT**  
Symmetry  
**NONE**  
Fluorescence  
**NONE**  
Inscription(s)  
**IGI LG790686574**

Comments: This Laboratory Grown Diamond was created by Chemical Vapor Deposition (CVD) growth process. Indications of post-growth treatment.