



**ELECTRONIC COPY**

LG790686539  
Report verification at igi.org



April 17, 2026  
IGI Report Number **LG790686539**  
Description **LABORATORY GROWN DIAMOND**  
Shape and Cutting Style **CUSHION MODIFIED BRILLIANT**  
Measurements **11.61 X 8.33 X 5.58 MM**  
**GRADING RESULTS**  
Carat Weight **5.07 CARATS**  
Color Grade **FANCY INTENSE YELLOW**  
Clarity Grade **VVS 2**

**LABORATORY GROWN DIAMOND REPORT**

April 17, 2026  
IGI Report Number **LG790686539**  
Description **LABORATORY GROWN DIAMOND**  
Shape and Cutting Style **CUSHION MODIFIED BRILLIANT**  
Measurements **11.61 X 8.33 X 5.58 MM**

**GRADING RESULTS**

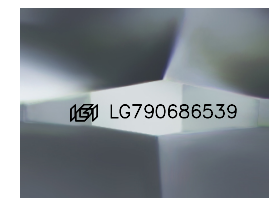
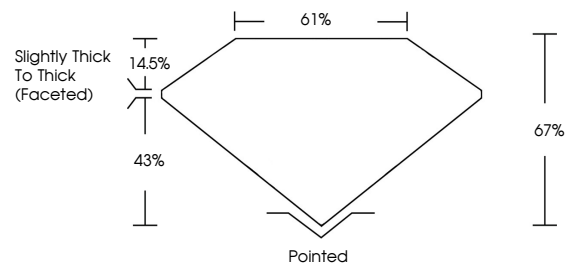
Carat Weight **5.07 CARATS**  
Color Grade **FANCY INTENSE YELLOW**  
Clarity Grade **VVS 2**

**ADDITIONAL GRADING INFORMATION**

Polish **EXCELLENT**  
Symmetry **EXCELLENT**  
Fluorescence **NONE**  
Inscription(s) **LG790686539**

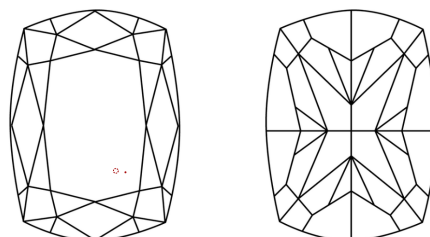
Comments: This Laboratory Grown Diamond was created by Chemical Vapor Deposition (CVD) growth process.

**PROPORTIONS**



Sample Image Used

**CLARITY CHARACTERISTICS**



**KEY TO SYMBOLS**

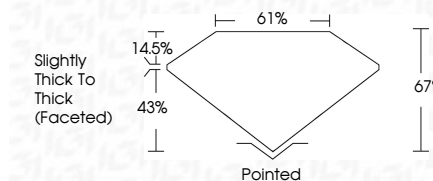
Red symbols indicate internal characteristics.  
Green symbols indicate external characteristics.

**COLOR**

D E F G H I J Faint Very Light Light

**CLARITY**

FL	IF	VVS <sup>1-2</sup>	VS <sup>1-2</sup>	SI <sup>1-2</sup>	I <sup>1-3</sup>
Flawless	Internally Flawless	Very Very Slightly Included	Very Slightly Included	Slightly Included	Included



**ADDITIONAL GRADING INFORMATION**

Polish **EXCELLENT**  
Symmetry **EXCELLENT**  
Fluorescence **NONE**  
Inscription(s) **LG790686539**  
Comments: This Laboratory Grown Diamond was created by Chemical Vapor Deposition (CVD) growth process.



April 17, 2026  
IGI Report No **LG790686539**  
**CUSHION MODIFIED BRILLIANT**  
**5.07 CARATS**  
Carat Weight **FANCY INTENSE YELLOW**  
Color Grade **VVS 2**  
Clarity Grade **67%**  
Depth **61%**  
Table **Slightly Thick To Thick (Faceted)**  
Girdle **Pointed**  
Culet **EXCELLENT**  
Polish **EXCELLENT**  
Symmetry **EXCELLENT**  
Fluorescence **NONE**  
Inscription(s) **LG790686539**  
Comments: This Laboratory Grown Diamond was created by Chemical Vapor Deposition (CVD) growth process.