



ELECTRONIC COPY

LG790686013
Report verification at igi.org



April 16, 2026

IGI Report Number **LG790686013**

Description **LABORATORY GROWN DIAMOND**

Shape and Cutting Style **ROUND BRILLIANT**

Measurements **9.23 - 9.33 X 5.72 MM**

GRADING RESULTS

Carat Weight **3.00 CARATS**

Color Grade **FANCY YELLOW**

Clarity Grade **VS 2**

Cut Grade **VERY GOOD**

April 16, 2026

IGI Report Number **LG790686013**

Description **LABORATORY GROWN DIAMOND**

Shape and Cutting Style **ROUND BRILLIANT**

Measurements **9.23 - 9.33 X 5.72 MM**

GRADING RESULTS

Carat Weight **3.00 CARATS**

Color Grade **FANCY YELLOW**

Clarity Grade **VS 2**

Cut Grade **VERY GOOD**

ADDITIONAL GRADING INFORMATION

Polish **EXCELLENT**

Symmetry **GOOD**

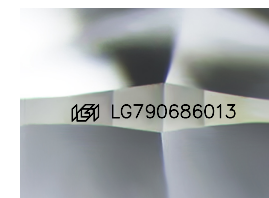
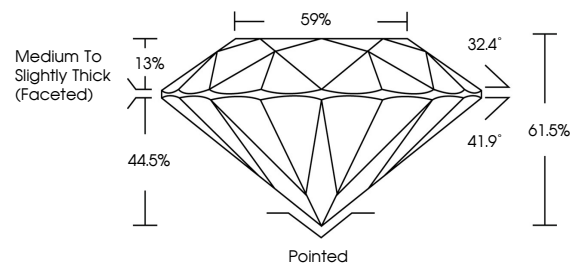
Fluorescence **VERY SLIGHT**

Inscription(s) **IGI LG790686013**

Comments: This Laboratory Grown Diamond was created by Chemical Vapor Deposition (CVD) growth process.

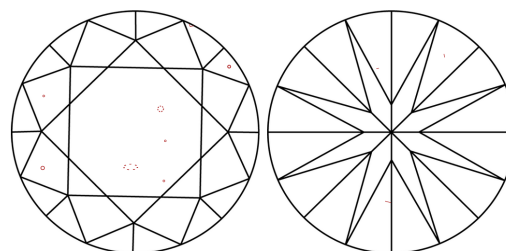
Indications of post-growth treatment.

PROPORTIONS



Sample Image Used

CLARITY CHARACTERISTICS



KEY TO SYMBOLS

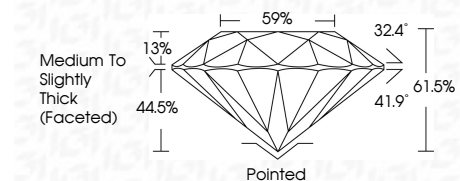
Red symbols indicate internal characteristics.
Green symbols indicate external characteristics.

COLOR

D E F G H I J Faint Very Light Light

CLARITY

FL	IF	VS ¹⁻²	VS ¹⁻²	SI ¹⁻²	I ¹⁻³
Flawless	Internally Flawless	Very Very Slightly Included	Very Slightly Included	Slightly Included	Included



ADDITIONAL GRADING INFORMATION

Polish **EXCELLENT**

Symmetry **GOOD**

Fluorescence **VERY SLIGHT**

Inscription(s) **IGI LG790686013**

Comments: This Laboratory Grown Diamond was created by Chemical Vapor Deposition (CVD) growth process. Indications of post-growth treatment.



April 16, 2026
IGI Report No LG790686013
ROUND BRILLIANT

3.00 CARATS
FANCY YELLOW

VS 2
VERY GOOD

9.23 - 9.33 X 5.72 MM
61.5%
59%
Medium To Slightly Thick (Faceted)

Pointed
EXCELLENT

GOOD
VERY SLIGHT

IGI LG790686013

Comments: This Laboratory Grown Diamond was created by Chemical Vapor Deposition (CVD) growth process. Indications of post-growth treatment.