



ELECTRONIC COPY

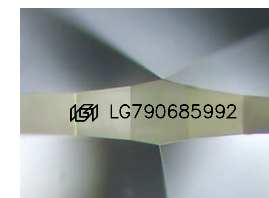
LG790685992
Report verification at igi.org



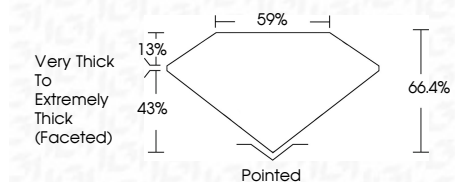
April 18, 2026
IGI Report Number **LG790685992**
Description **LABORATORY GROWN DIAMOND**

Shape and Cutting Style **PEAR MODIFIED BRILLIANT**
Measurements **10.22 X 6.60 X 4.38 MM**

GRADING RESULTS
Carat Weight **2.16 CARATS**
Color Grade **FANCY VIVID YELLOW**
Clarity Grade **VS 1**



Sample Image Used



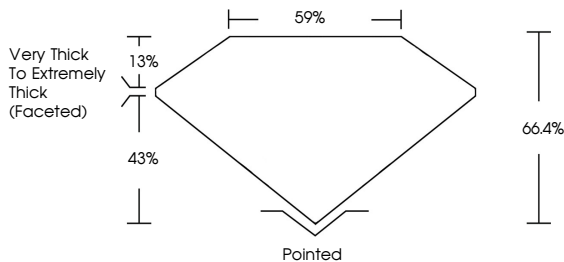
ADDITIONAL GRADING INFORMATION
Polish **EXCELLENT**
Symmetry **EXCELLENT**
Fluorescence **NONE**
Inscription(s) **IGI LG790685992**
Comments: This Laboratory Grown Diamond was created by Chemical Vapor Deposition (CVD) growth process.



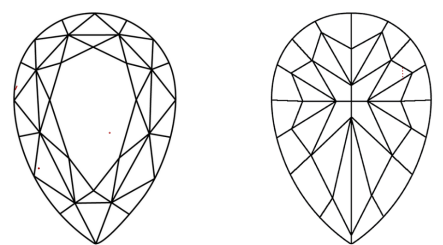
April 18, 2026
IGI Report No LG790685992
PEAR MODIFIED BRILLIANT
10.22 X 6.60 X 4.38 MM
2.16 CARATS
FANCY VIVID YELLOW
Color Grade
Clarity Grade VS 1
Depth 66.4%
Table 59%
Girdle Very Thick to Extremely Thick (Faceted)
Culet Pointed
Polish EXCELLENT
Symmetry EXCELLENT
Fluorescence NONE
Inscription(s) IGI LG790685992
Comments: This Laboratory Grown Diamond was created by Chemical Vapor Deposition (CVD) growth process.

April 18, 2026
IGI Report Number **LG790685992**
Description **LABORATORY GROWN DIAMOND**
Shape and Cutting Style **PEAR MODIFIED BRILLIANT**
Measurements **10.22 X 6.60 X 4.38 MM**
GRADING RESULTS
Carat Weight **2.16 CARATS**
Color Grade **FANCY VIVID YELLOW**
Clarity Grade **VS 1**
ADDITIONAL GRADING INFORMATION
Polish **EXCELLENT**
Symmetry **EXCELLENT**
Fluorescence **NONE**
Inscription(s) **IGI LG790685992**
Comments: This Laboratory Grown Diamond was created by Chemical Vapor Deposition (CVD) growth process.

PROPORTIONS



CLARITY CHARACTERISTICS



KEY TO SYMBOLS
Red symbols indicate internal characteristics.
Green symbols indicate external characteristics.

COLOR

D	E	F	G	H	I	J	Faint	Very Light	Light
---	---	---	---	---	---	---	-------	------------	-------

CLARITY

FL	IF	VS ¹⁻²	VS ¹⁻²	SI ¹⁻²	I ¹⁻³
Flawless	Internally Flawless	Very Very Slightly Included	Very Slightly Included	Slightly Included	Included

