



**ELECTRONIC COPY**

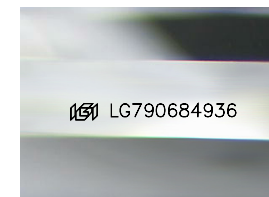
LG790684936  
Report verification at igi.org



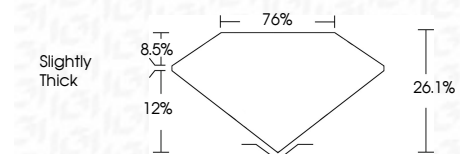
April 14, 2026  
IGI Report Number **LG790684936**  
Description **LABORATORY GROWN DIAMOND**  
Shape and Cutting Style **EMERALD ROSE CUT**  
Measurements **12.75 X 8.49 X 2.22 MM**

**GRADING RESULTS**

Carat Weight **3.05 CARATS**  
Color Grade **E**  
Clarity Grade **VVS 2**



Sample Image Used



**ADDITIONAL GRADING INFORMATION**

Polish **EXCELLENT**  
Symmetry **EXCELLENT**  
Fluorescence **NONE**  
Inscription(s) **IGI LG790684936**  
Comments: This Laboratory Grown Diamond was created by Chemical Vapor Deposition (CVD) growth process. Type IIa



April 14, 2026  
IGI Report No LG790684936  
**EMERALD ROSE CUT**  
12.75 X 8.49 X 2.22 MM  
3.05 CARATS  
E  
3.05 CARATS  
E  
VVS 2  
26.1%  
76%  
Slightly Thick  
EXCELLENT  
EXCELLENT  
NONE  
IGI LG790684936  
Comments: This Laboratory Grown Diamond was created by Chemical Vapor Deposition (CVD) growth process. Type IIa

**LABORATORY GROWN DIAMOND REPORT**

April 14, 2026  
IGI Report Number **LG790684936**  
Description **LABORATORY GROWN DIAMOND**  
Shape and Cutting Style **EMERALD ROSE CUT**  
Measurements **12.75 X 8.49 X 2.22 MM**

**GRADING RESULTS**

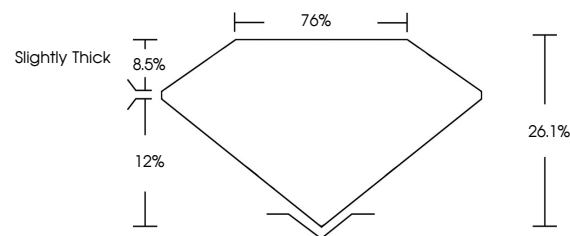
Carat Weight **3.05 CARATS**  
Color Grade **E**  
Clarity Grade **VVS 2**

**ADDITIONAL GRADING INFORMATION**

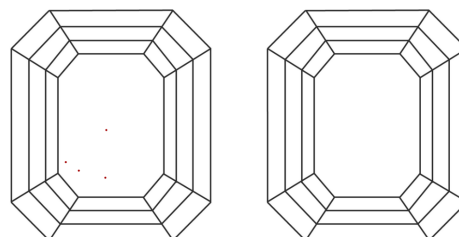
Polish **EXCELLENT**  
Symmetry **EXCELLENT**  
Fluorescence **NONE**  
Inscription(s) **IGI LG790684936**

Comments: This Laboratory Grown Diamond was created by Chemical Vapor Deposition (CVD) growth process. Type IIa

**PROPORTIONS**



**CLARITY CHARACTERISTICS**



**KEY TO SYMBOLS**

Red symbols indicate internal characteristics.  
Green symbols indicate external characteristics.

**COLOR**

D E F G H I J Faint Very Light Light

**CLARITY**

FL	IF	VVS <sup>1-2</sup>	VS <sup>1-2</sup>	SI <sup>1-2</sup>	I <sup>1-3</sup>
Flawless	Internally Flawless	Very Very Slightly Included	Very Slightly Included	Slightly Included	Included