



**ELECTRONIC COPY**

LG790684926  
Report verification at [igi.org](http://igi.org)



April 13, 2026  
IGI Report Number **LG790684926**  
Description **LABORATORY GROWN DIAMOND**  
Shape and Cutting Style **MODIFIED OCTAGON STEP CUT**  
Measurements **7.72 X 4.55 X 3.10 MM**  
**GRADING RESULTS**  
Carat Weight **1.03 CARAT**  
Color Grade **E**  
Clarity Grade **VVS 1**

**LABORATORY GROWN DIAMOND REPORT**

April 13, 2026  
IGI Report Number **LG790684926**  
Description **LABORATORY GROWN DIAMOND**  
Shape and Cutting Style **MODIFIED OCTAGON STEP CUT**  
Measurements **7.72 X 4.55 X 3.10 MM**

**GRADING RESULTS**

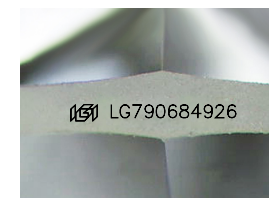
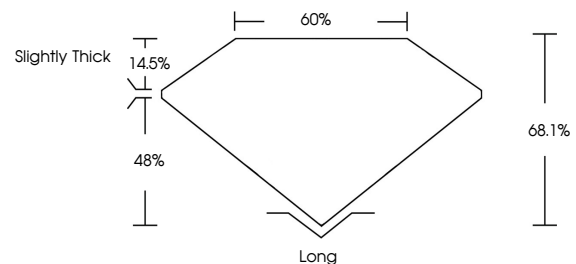
Carat Weight **1.03 CARAT**  
Color Grade **E**  
Clarity Grade **VVS 1**

**ADDITIONAL GRADING INFORMATION**

Polish **EXCELLENT**  
Symmetry **EXCELLENT**  
Fluorescence **NONE**  
Inscription(s) **IGI LG790684926**

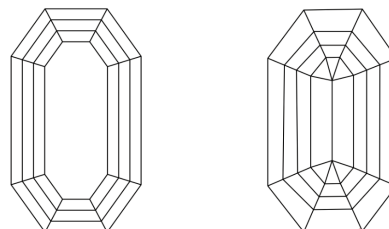
Comments: This Laboratory Grown Diamond was created by Chemical Vapor Deposition (CVD) growth process. Type IIa

**PROPORTIONS**



Sample Image Used

**CLARITY CHARACTERISTICS**



**KEY TO SYMBOLS**

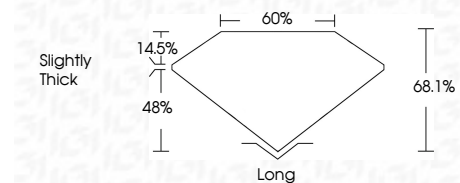
Red symbols indicate internal characteristics.  
Green symbols indicate external characteristics.

**COLOR**

D E F G H I J Faint Very Light Light

**CLARITY**

FL	IF	VVS <sup>1-2</sup>	VS <sup>1-2</sup>	SI <sup>1-2</sup>	I <sup>1-3</sup>
Flawless	Internally Flawless	Very Very Slightly Included	Very Slightly Included	Slightly Included	Included



**ADDITIONAL GRADING INFORMATION**

Polish **EXCELLENT**  
Symmetry **EXCELLENT**  
Fluorescence **NONE**  
Inscription(s) **IGI LG790684926**  
Comments: This Laboratory Grown Diamond was created by Chemical Vapor Deposition (CVD) growth process. Type IIa



**IGI**



April 13, 2026  
IGI Report No **LG790684926**  
**MODIFIED OCTAGON STEP CUT**  
7.72 X 4.55 X 3.10 MM  
1.03 CARAT  
E  
VVS 1  
68.1%  
48%  
Slightly Thick  
Long  
EXCELLENT  
EXCELLENT  
NONE  
IGI LG790684926  
Comments: This Laboratory Grown Diamond was created by Chemical Vapor Deposition (CVD) growth process. Type IIa