



**LABORATORY GROWN DIAMOND REPORT**

April 10, 2026  
 IGI Report Number **LG790682045**  
 Description **LABORATORY GROWN DIAMOND**  
 Shape and Cutting Style **CUT CORNERED RECTANGULAR MODIFIED  
BRILLIANT**  
 Measurements **5.84 X 3.95 X 2.68 MM**

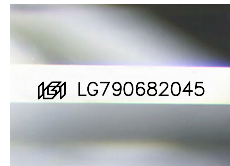
**GRADING RESULTS**

Carat Weight **0.52 CARAT**  
 Color Grade **E**  
 Clarity Grade **VVS 1**

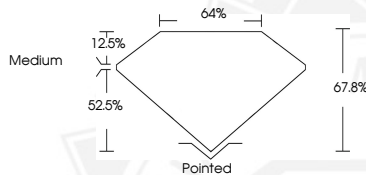
**ADDITIONAL GRADING INFORMATION**

Polish **EXCELLENT**  
 Symmetry **EXCELLENT**  
 Fluorescence **NONE**  
 Inscription(s) **IGI LG790682045**

Comments: As Grown - No indication of post-growth treatment.  
 This Laboratory Grown Diamond was created by High Pressure High  
 Temperature (HPHT) growth process.  
 Type II



Sample Image Used



April 10, 2026  
 IGI Report Number **LG790682045**  
 CUT CORNERED RECTANGULAR  
 MODIFIED BRILLIANT  
 LABORATORY GROWN DIAMOND  
**5.84 X 3.95 X 2.68 MM**  
 Carat Weight **0.52 CARAT**  
 Color Grade **E**  
 Clarity Grade **VVS 1**  
 Polish **EXCELLENT**  
 Symmetry **EXCELLENT**  
 Fluorescence **NONE**  
 Inscription(s) **IGI LG790682045**

Comments: As Grown - No  
 indication of post-growth  
 treatment. This Laboratory Grown  
 Diamond was created by High  
 Pressure High Temperature (HPHT)  
 growth process. Type II



April 10, 2026  
 IGI Report Number **LG790682045**  
 CUT CORNERED RECTANGULAR  
 MODIFIED BRILLIANT  
 LABORATORY GROWN DIAMOND  
**5.84 X 3.95 X 2.68 MM**  
 Carat Weight **0.52 CARAT**  
 Color Grade **E**  
 Clarity Grade **VVS 1**  
 Polish **EXCELLENT**  
 Symmetry **EXCELLENT**  
 Fluorescence **NONE**  
 Inscription(s) **IGI LG790682045**

Comments: As Grown - No  
 indication of post-growth  
 treatment. This Laboratory Grown  
 Diamond was created by High  
 Pressure High Temperature (HPHT)  
 growth process. Type II



THIS DOCUMENT WAS PRODUCED WITH THE FOLLOWING SECURITY MEASURES: SPECIAL DOCUMENT PAPER, INK SCREENS, WATERMARK, BACKGROUND DESIGNS, HOLOGRAM AND OTHER SECURITY FEATURES NOT LISTED AND DO EXCEED DOCUMENT SECURITY INDUSTRY GUIDELINES.