



ELECTRONIC COPY

LG790681880
Report verification at igi.org



April 10, 2026

IGI Report Number **LG790681880**

Description **LABORATORY GROWN DIAMOND**

Shape and Cutting Style **CUT CORNERED
RECTANGULAR MODIFIED
BRILLIANT**

Measurements **9.87 X 6.60 X 4.15 MM**

GRADING RESULTS

Carat Weight **2.53 CARATS**

Color Grade **FANCY INTENSE PINK**

Clarity Grade **VS 1**

April 10, 2026
IGI Report Number **LG790681880**
Description **LABORATORY GROWN DIAMOND**
Shape and Cutting Style **CUT CORNERED RECTANGULAR
MODIFIED BRILLIANT**
Measurements **9.87 X 6.60 X 4.15 MM**

GRADING RESULTS

Carat Weight **2.53 CARATS**

Color Grade **FANCY INTENSE PINK**

Clarity Grade **VS 1**

ADDITIONAL GRADING INFORMATION

Polish **EXCELLENT**

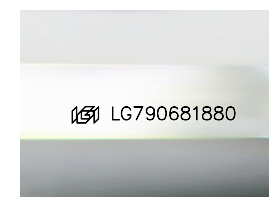
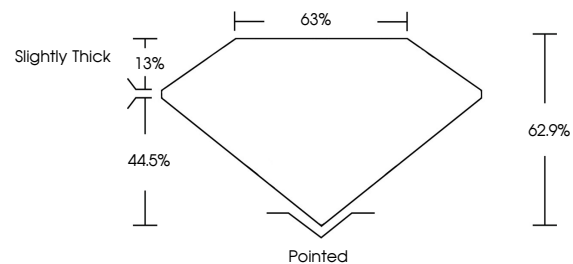
Symmetry **EXCELLENT**

Fluorescence **SLIGHT**

Inscription(s) **IGI LG790681880**

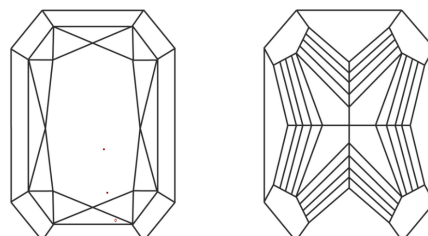
Comments: This Laboratory Grown Diamond was created by Chemical Vapor Deposition (CVD) growth process. Indications of post-growth treatment.

PROPORTIONS



Sample Image Used

CLARITY CHARACTERISTICS



KEY TO SYMBOLS

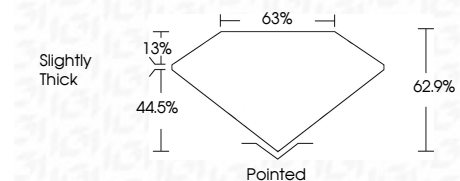
Red symbols indicate internal characteristics.
Green symbols indicate external characteristics.

COLOR

D E F G H I J Faint Very Light Light

CLARITY

FL	IF	VS ¹⁻²	VS ¹⁻²	SI ¹⁻²	I ¹⁻³
Flawless	Internally Flawless	Very Very Slightly Included	Very Slightly Included	Slightly Included	Included



ADDITIONAL GRADING INFORMATION

Polish **EXCELLENT**

Symmetry **EXCELLENT**

Fluorescence **SLIGHT**

Inscription(s) **IGI LG790681880**

Comments: This Laboratory Grown Diamond was created by Chemical Vapor Deposition (CVD) growth process. Indications of post-growth treatment.



IGI



April 10, 2026
IGI Report No LG790681880
CUT CORNERED RECT. MODIFIED BRILLIANT
9.87 X 6.60 X 4.15 MM
2.53 CARATS
FANCY INTENSE PINK
VS 1
62.9%
63%
Slightly Thick
Pointed
EXCELLENT
EXCELLENT
SLIGHT
IGI LG790681880

Comments: This Laboratory Grown Diamond was created by Chemical Vapor Deposition (CVD) growth process. Indications of post-growth treatment.