



ELECTRONIC COPY

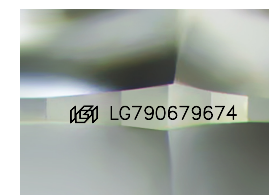
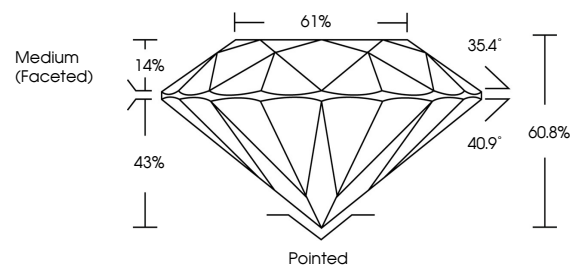
LG790679674
Report verification at igi.org



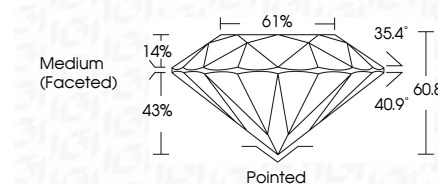
April 11, 2026
IGI Report Number LG790679674
Description LABORATORY GROWN DIAMOND
Shape and Cutting Style ROUND BRILLIANT
Measurements 8.07 - 8.13 X 4.92 MM
GRADING RESULTS
Carat Weight 2.00 CARATS
Color Grade E
Clarity Grade VVS 2
Cut Grade EXCELLENT

April 11, 2026
IGI Report Number LG790679674
Description LABORATORY GROWN DIAMOND
Shape and Cutting Style ROUND BRILLIANT
Measurements 8.07 - 8.13 X 4.92 MM
GRADING RESULTS
Carat Weight 2.00 CARATS
Color Grade E
Clarity Grade VVS 2
Cut Grade EXCELLENT

PROPORTIONS



Sample Image Used



ADDITIONAL GRADING INFORMATION

Polish EXCELLENT
Symmetry VERY GOOD
Fluorescence NONE
Inscription(s) IGI LG790679674

Comments: This Laboratory Grown Diamond was created by Chemical Vapor Deposition (CVD) growth process. Type IIa

ADDITIONAL GRADING INFORMATION

Polish EXCELLENT
Symmetry VERY GOOD
Fluorescence NONE
Inscription(s) IGI LG790679674
Comments: This Laboratory Grown Diamond was created by Chemical Vapor Deposition (CVD) growth process. Type IIa

COLOR

D E F G H I J Faint Very Light Light

CLARITY

FL IF VVS 1-2 VS 1-2 SI 1-2 I 1-3
Flawless Internally Flawless Very Very Slightly Included Very Slightly Included Slightly Included Included



IGI



April 11, 2026
IGI Report No LG790679674
ROUND BRILLIANT
8.07 - 8.13 X 4.92 MM
2.00 CARATS E
Carat Weight
Color Grade EXCELLENT
Clarity Grade VVS 2
Depth 60.8%
Table 61%
Girdle Medium (Faceted)
Culet Pointed
Polish EXCELLENT
Symmetry VERY GOOD
Fluorescence NONE
Inscription(s) IGI LG790679674
Comments: This Laboratory Grown Diamond was created by Chemical Vapor Deposition (CVD) growth process. Type IIa