



ELECTRONIC COPY

LG790679245
Report verification at igi.org



April 16, 2026
IGI Report Number **LG790679245**
Description **LABORATORY GROWN DIAMOND**
Shape and Cutting Style **CUSHION MODIFIED BRILLIANT**
Measurements **12.20 X 8.23 X 5.70 MM**
GRADING RESULTS
Carat Weight **4.54 CARATS**
Color Grade **F**
Clarity Grade **VS 1**

April 16, 2026
IGI Report Number **LG790679245**
Description **LABORATORY GROWN DIAMOND**
Shape and Cutting Style **CUSHION MODIFIED BRILLIANT**
Measurements **12.20 X 8.23 X 5.70 MM**

GRADING RESULTS

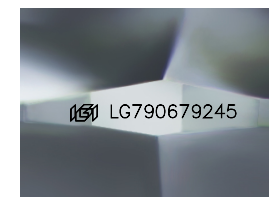
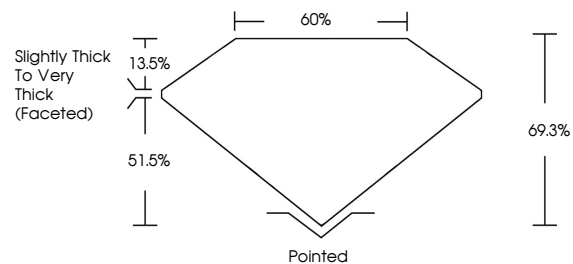
Carat Weight **4.54 CARATS**
Color Grade **F**
Clarity Grade **VS 1**

ADDITIONAL GRADING INFORMATION

Polish **EXCELLENT**
Symmetry **EXCELLENT**
Fluorescence **NONE**
Inscription(s) **IGI LG790679245**

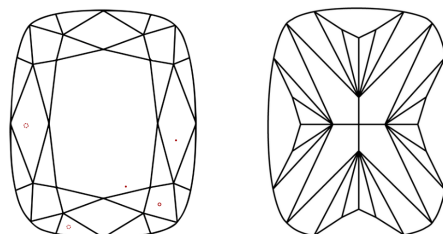
Comments: This Laboratory Grown Diamond was created by Chemical Vapor Deposition (CVD) growth process. Type IIa

PROPORTIONS



Sample Image Used

CLARITY CHARACTERISTICS



KEY TO SYMBOLS

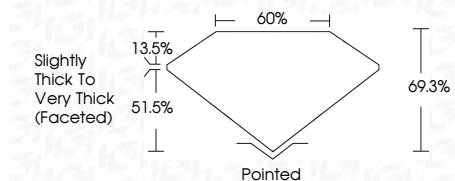
Red symbols indicate internal characteristics.
Green symbols indicate external characteristics.

COLOR

D E F G H I J Faint Very Light Light

CLARITY

FL	IF	VS ¹⁻²	VS ¹⁻²	SI ¹⁻²	I ¹⁻³
Flawless	Internally Flawless	Very Very Slightly Included	Very Slightly Included	Slightly Included	Included



ADDITIONAL GRADING INFORMATION

Polish **EXCELLENT**
Symmetry **EXCELLENT**
Fluorescence **NONE**
Inscription(s) **IGI LG790679245**
Comments: This Laboratory Grown Diamond was created by Chemical Vapor Deposition (CVD) growth process. Type IIa



April 16, 2026
IGI Report No LG790679245
CUSHION MODIFIED BRILLIANT
12.20 X 8.23 X 5.70 MM
4.54 CARATS
F
VS 1
69.3%
51.5%
Slightly Thick To Very Thick (Faceted)
Pointed
EXCELLENT
EXCELLENT
NONE
IGI LG790679245
Comments: This Laboratory Grown Diamond was created by Chemical Vapor Deposition (CVD) growth process. Type IIa