



ELECTRONIC COPY

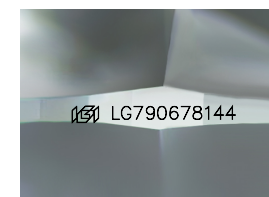
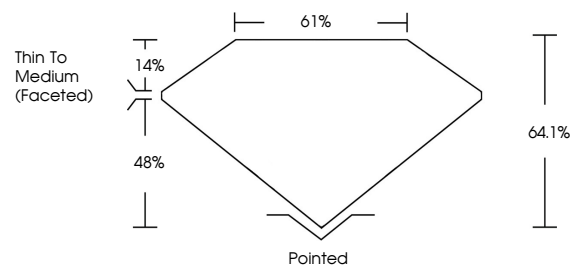
LG790678144
Report verification at igi.org



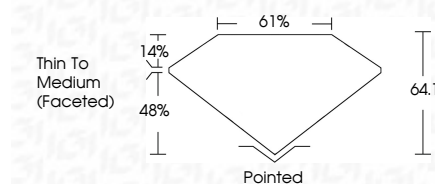
April 16, 2026
IGI Report Number **LG790678144**
Description **LABORATORY GROWN DIAMOND**
Shape and Cutting Style **CUSHION MODIFIED BRILLIANT**
Measurements **11.05 X 8.34 X 5.35 MM**
GRADING RESULTS
Carat Weight **3.62 CARATS**
Color Grade **F**
Clarity Grade **VVS 2**

April 16, 2026
IGI Report Number **LG790678144**
Description **LABORATORY GROWN DIAMOND**
Shape and Cutting Style **CUSHION MODIFIED BRILLIANT**
Measurements **11.05 X 8.34 X 5.35 MM**
GRADING RESULTS
Carat Weight **3.62 CARATS**
Color Grade **F**
Clarity Grade **VVS 2**

PROPORTIONS



Sample Image Used



ADDITIONAL GRADING INFORMATION
Polish **EXCELLENT**
Symmetry **EXCELLENT**
Fluorescence **NONE**
Inscription(s) **IGI LG790678144**

Comments: This Laboratory Grown Diamond was created by Chemical Vapor Deposition (CVD) growth process. Type IIa

COLOR

D E F G H I J Faint Very Light Light

CLARITY

FL	IF	VVS ¹⁻²	VS ¹⁻²	SI ¹⁻²	I ¹⁻³
Flawless	Internally Flawless	Very Very Slightly Included	Very Slightly Included	Slightly Included	Included

ADDITIONAL GRADING INFORMATION

Polish **EXCELLENT**
Symmetry **EXCELLENT**
Fluorescence **NONE**
Inscription(s) **IGI LG790678144**
Comments: This Laboratory Grown Diamond was created by Chemical Vapor Deposition (CVD) growth process. Type IIa



April 16, 2026
IGI Report No **LG790678144**
CUSHION MODIFIED BRILLIANT
3.62 CARATS
F
Carat Weight
Color Grade
Clarity Grade **VVS 2**
Depth **64.1%**
Table **61%**
Girdle
Thin To Medium (Faceted)
Culet
Polish
Symmetry
Fluorescence
Inscription(s)
EXCELLENT
EXCELLENT
NONE
IGI LG790678144

Comments: This Laboratory Grown Diamond was created by Chemical Vapor Deposition (CVD) growth process. Type IIa