



ELECTRONIC COPY

LG79067745
Report verification at igi.org



April 16, 2026
IGI Report Number **LG79067745**
Description **LABORATORY GROWN DIAMOND**
Shape and Cutting Style **CUT CORNERED
RECTANGULAR MODIFIED
BRILLIANT**
Measurements **11.14 X 7.86 X 5.17 MM**
GRADING RESULTS
Carat Weight **4.10 CARATS**
Color Grade **F**
Clarity Grade **VS 1**

April 16, 2026
IGI Report Number **LG79067745**
Description **LABORATORY GROWN DIAMOND**
Shape and Cutting Style **CUT CORNERED RECTANGULAR
MODIFIED BRILLIANT**
Measurements **11.14 X 7.86 X 5.17 MM**

GRADING RESULTS

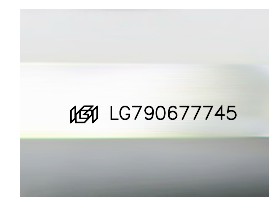
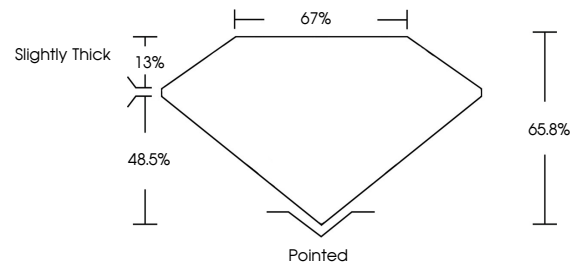
Carat Weight **4.10 CARATS**
Color Grade **F**
Clarity Grade **VS 1**

ADDITIONAL GRADING INFORMATION

Polish **EXCELLENT**
Symmetry **EXCELLENT**
Fluorescence **NONE**
Inscription(s) **IGI LG79067745**

Comments: This Laboratory Grown Diamond was created by Chemical Vapor Deposition (CVD) growth process.
Type IIa

PROPORTIONS



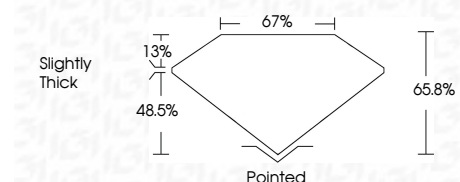
Sample Image Used

COLOR

D E F G H I J Faint Very Light Light

CLARITY

| FL | IF | VS ¹⁻² | VS ¹⁻² | SI ¹⁻² | I ¹⁻³ |
|----------|---------------------|-----------------------------|------------------------|-------------------|------------------|
| Flawless | Internally Flawless | Very Very Slightly Included | Very Slightly Included | Slightly Included | Included |



ADDITIONAL GRADING INFORMATION

Polish **EXCELLENT**
Symmetry **EXCELLENT**
Fluorescence **NONE**
Inscription(s) **IGI LG79067745**
Comments: This Laboratory Grown Diamond was created by Chemical Vapor Deposition (CVD) growth process.
Type IIa



IGI



April 16, 2026
IGI Report No **LG79067745**
CUT CORNERED RECT. MODIFIED BRILLIANT
4.10 CARATS
F
Color Grade
VS 1
65.8%
0.7%
Slightly Thick
Pointed
EXCELLENT
EXCELLENT
NONE
IGI LG79067745

Comments: This Laboratory Grown Diamond was created by Chemical Vapor Deposition (CVD) growth process.
Type IIa