



**INTERNATIONAL
GEMOLOGICAL
INSTITUTE**

LABORATORY GROWN DIAMOND REPORT

April 27, 2026
 IGI Report Number **LG790676863**
 Description **LABORATORY GROWN DIAMOND**
 Shape and Cutting Style **ROUND BRILLIANT**
 Measurements **4.81 - 4.83 X 2.91 MM**

GRADING RESULTS

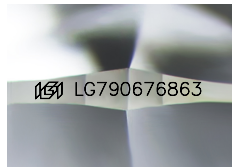
Carat Weight **0.41 CARAT**
 Color Grade **FANCY INTENSE YELLOW**
 Clarity Grade **VVS 1**
 Cut Grade **IDEAL**

ADDITIONAL GRADING INFORMATION

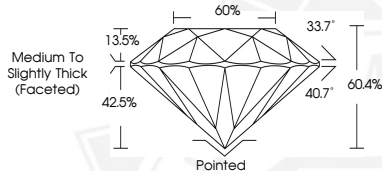
Polish **VERY GOOD**
 Symmetry **EXCELLENT**
 Fluorescence **NONE**
 Inscription(s) **IGI LG790676863**

Comments: As Grown - No indication of post-growth treatment. This Laboratory Grown Diamond was created by High Pressure High Temperature (HPHT) growth process.

ELECTRONIC COPY



Sample Image Used



April 27, 2026
 IGI Report Number **LG790676863**
 ROUND BRILLIANT
 LABORATORY GROWN DIAMOND
 4.81 - 4.83 X 2.91 MM
 Carat Weight **0.41 CARAT**
 Color Grade **FANCY INTENSE YELLOW**
 Clarity Grade **VVS 1**
 Cut Grade **IDEAL**
 Polish **VERY GOOD**
 Symmetry **EXCELLENT**
 Fluorescence **NONE**
 Inscription(s) **IGI LG790676863**

Comments: As Grown - No indication of post-growth treatment. This Laboratory Grown Diamond was created by High Pressure High Temperature (HPHT) growth process.



April 27, 2026
 IGI Report Number **LG790676863**
 ROUND BRILLIANT
 LABORATORY GROWN DIAMOND
 4.81 - 4.83 X 2.91 MM
 Carat Weight **0.41 CARAT**
 Color Grade **FANCY INTENSE YELLOW**
 Clarity Grade **VVS 1**
 Cut Grade **IDEAL**
 Polish **VERY GOOD**
 Symmetry **EXCELLENT**
 Fluorescence **NONE**
 Inscription(s) **IGI LG790676863**

Comments: As Grown - No indication of post-growth treatment. This Laboratory Grown Diamond was created by High Pressure High Temperature (HPHT) growth process.



THIS DOCUMENT WAS PRODUCED WITH THE FOLLOWING SECURITY MEASURES: SPECIAL DOCUMENT PAPER, INK SCREENS, WATERMARK, BACKGROUND DESIGNS, HOLOGRAM AND OTHER SECURITY FEATURES NOT LISTED AND DO EXCEED DOCUMENT SECURITY INDUSTRY GUIDELINES.

For terms & conditions and to verify this report, please visit www.igi.org