



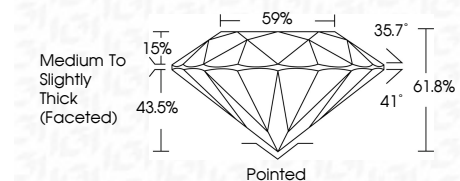
ELECTRONIC COPY

LG790676660
Report verification at igi.org



April 22, 2026
IGI Report Number **LG790676660**
Description **LABORATORY GROWN DIAMOND**
Shape and Cutting Style **ROUND BRILLIANT**
Measurements **6.81 - 6.84 X 4.22 MM**

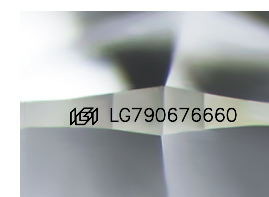
GRADING RESULTS
Carat Weight **1.21 CARAT**
Color Grade **D**
Clarity Grade **VS 1**
Cut Grade **IDEAL**



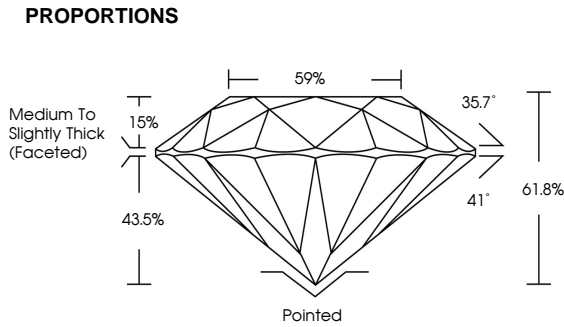
ADDITIONAL GRADING INFORMATION
Polish **EXCELLENT**
Symmetry **EXCELLENT**
Fluorescence **NONE**
Inscription(s) **IGI LG790676660**
Comments: As Grown - No indication of post-growth treatment.
This Laboratory Grown Diamond was created by High Pressure High Temperature (HPHT) growth process.
Type II



April 22, 2026
IGI Report No **LG790676660**
ROUND BRILLIANT
Carat Weight **1.21 CARAT**
Color Grade **D**
Clarity Grade **VS 1**
Cut Grade **IDEAL**
Depth **61.8%**
Table **59%**
Crown Height **Medium To Slightly Thick (Faceted)**
Crown Angle **35.7°**
Pavilion Angle **41°**
Total Depth **61.8%**
Culet **Pointed**
Polish **EXCELLENT**
Symmetry **EXCELLENT**
Fluorescence **NONE**
Inscription(s) **IGI LG790676660**
Comments: As Grown - No indication of post-growth treatment.
This Laboratory Grown Diamond was created by High Pressure High Temperature (HPHT) growth process.
Type II



Sample Image Used



COLOR

D	E	F	G	H	I	J	Faint	Very Light	Light
---	---	---	---	---	---	---	-------	------------	-------

CLARITY

FL	IF	VS ¹⁻²	VS ¹⁻²	SI ¹⁻²	I ¹⁻³
Flawless	Internally Flawless	Very Very Slightly Included	Very Slightly Included	Slightly Included	Included

