



April 17, 2026

**IGI Report Number** LG790676588  
**ROUND BRILLIANT**  
**LABORATORY GROWN DIAMOND**  
**4.85 - 4.87 X 3.01 MM**

**Carat Weight** 0.43 CARAT  
**Color Grade** FANCY INTENSE YELLOW  
**Clarity Grade** VS 1  
**Cut Grade** IDEAL  
**Polish** EXCELLENT  
**Symmetry** EXCELLENT  
**Fluorescence** NONE  
**Inscription(s)** IGI LG790676588

**Comments:** As Grown - No indication of post-growth treatment. This Laboratory Grown Diamond was created by High Pressure High Temperature (HPHT) growth process.

**LABORATORY GROWN DIAMOND REPORT**

April 17, 2026  
IGI Report Number **LG790676588**  
Description **LABORATORY GROWN DIAMOND**  
Shape and Cutting Style **ROUND BRILLIANT**  
Measurements **4.85 - 4.87 X 3.01 MM**

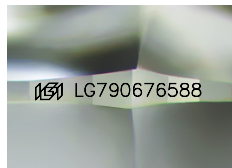
**GRADING RESULTS**

**Carat Weight** 0.43 CARAT  
**Color Grade** FANCY INTENSE YELLOW  
**Clarity Grade** VS 1  
**Cut Grade** IDEAL

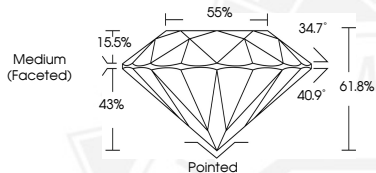
**ADDITIONAL GRADING INFORMATION**

**Polish** EXCELLENT  
**Symmetry** EXCELLENT  
**Fluorescence** NONE  
**Inscription(s)** IGI LG790676588

**Comments:** As Grown - No indication of post-growth treatment. This Laboratory Grown Diamond was created by High Pressure High Temperature (HPHT) growth process.



Sample Image Used



April 17, 2026

**IGI Report Number** LG790676588  
**ROUND BRILLIANT**  
**LABORATORY GROWN DIAMOND**  
**4.85 - 4.87 X 3.01 MM**

**Carat Weight** 0.43 CARAT  
**Color Grade** FANCY INTENSE YELLOW  
**Clarity Grade** VS 1  
**Cut Grade** IDEAL  
**Polish** EXCELLENT  
**Symmetry** EXCELLENT  
**Fluorescence** NONE  
**Inscription(s)** IGI LG790676588

**Comments:** As Grown - No indication of post-growth treatment. This Laboratory Grown Diamond was created by High Pressure High Temperature (HPHT) growth process.



THIS DOCUMENT WAS PRODUCED WITH THE FOLLOWING SECURITY MEASURES: SPECIAL DOCUMENT PAPER, INK SCREENS, WATERMARK, BACKGROUND DESIGNS, HOLOGRAM AND OTHER SECURITY FEATURES NOT LISTED AND DO EXCEED DOCUMENT SECURITY INDUSTRY GUIDELINES.