



ELECTRONIC COPY

LG790675890
Report verification at igi.org



April 29, 2026
IGI Report Number LG790675890
Description LABORATORY GROWN DIAMOND
Shape and Cutting Style SQUARE CUSHION MODIFIED BRILLIANT
Measurements 9.48 X 9.23 X 6.02 MM
GRADING RESULTS
Carat Weight 5.01 CARATS
Color Grade FANCY VIVID YELLOW
Clarity Grade VS 2

April 29, 2026
IGI Report Number LG790675890
Description LABORATORY GROWN DIAMOND
Shape and Cutting Style SQUARE CUSHION MODIFIED BRILLIANT
Measurements 9.48 X 9.23 X 6.02 MM

GRADING RESULTS

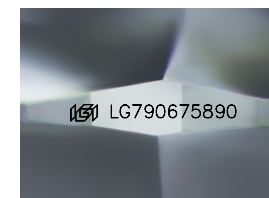
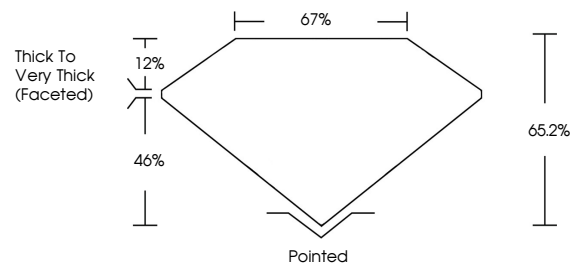
Carat Weight 5.01 CARATS
Color Grade FANCY VIVID YELLOW
Clarity Grade VS 2

ADDITIONAL GRADING INFORMATION

Polish EXCELLENT
Symmetry EXCELLENT
Fluorescence NONE
Inscription(s) IGI LG790675890

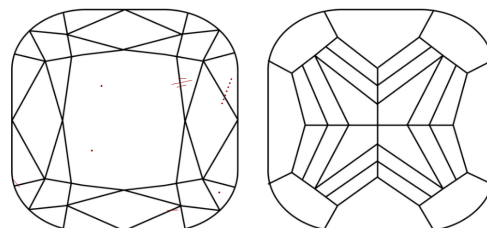
Comments: This Laboratory Grown Diamond was created by Chemical Vapor Deposition (CVD) growth process.

PROPORTIONS



Sample Image Used

CLARITY CHARACTERISTICS



KEY TO SYMBOLS

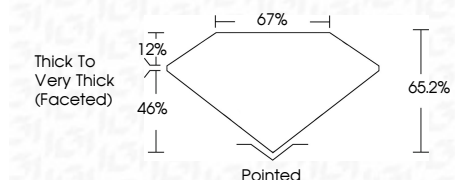
Red symbols indicate internal characteristics.
Green symbols indicate external characteristics.

COLOR

D E F G H I J Faint Very Light Light

CLARITY

FL IF VS 1-2 VS 1-2 SI 1-2 I 1-3
Flawless Internally Flawless Very Very Slightly Included Very Slightly Included Slightly Included Included



ADDITIONAL GRADING INFORMATION

Polish EXCELLENT
Symmetry EXCELLENT
Fluorescence NONE
Inscription(s) IGI LG790675890
Comments: This Laboratory Grown Diamond was created by Chemical Vapor Deposition (CVD) growth process.



April 29, 2026
IGI Report No LG790675890
SQUARE CUSHION MODIFIED BRILLIANT
9.48 X 9.23 X 6.02 MM
5.01 CARATS
FANCY VIVID YELLOW
VS 2
65.2%
67%
Thick to Very Thick (Faceted)
Pointed
EXCELLENT
EXCELLENT
NONE
IGI LG790675890
Comments: This Laboratory Grown Diamond was created by Chemical Vapor Deposition (CVD) growth process.