



LABORATORY GROWN DIAMOND REPORT

April 22, 2026
 IGI Report Number **LG790675732**
 Description **LABORATORY GROWN DIAMOND**
 Shape and Cutting Style **OVAL BRILLIANT**
 Measurements **6.46 X 4.26 X 2.40 MM**

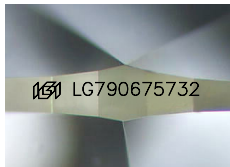
GRADING RESULTS

Carat Weight **0.46 CARAT**
 Color Grade **FANCY INTENSE YELLOW**
 Clarity Grade **VS 2**

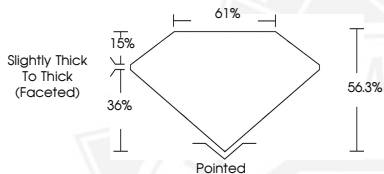
ADDITIONAL GRADING INFORMATION

Polish **VERY GOOD**
 Symmetry **VERY GOOD**
 Fluorescence **NONE**
 Inscription(s) **IGI LG790675732**

Comments: This Laboratory Grown Diamond was created by Chemical Vapor Deposition (CVD) growth process.



Sample Image Used



April 22, 2026
 IGI Report Number **LG790675732**
 OVAL BRILLIANT
 LABORATORY GROWN DIAMOND
6.46 X 4.26 X 2.40 MM
 Carat Weight **0.46 CARAT**
 Color Grade **FANCY INTENSE YELLOW**
 Clarity Grade **VS 2**
 Polish **VERY GOOD**
 Symmetry **VERY GOOD**
 Fluorescence **NONE**
 Inscription(s) **IGI LG790675732**
 Comments: This Laboratory Grown Diamond was created by Chemical Vapor Deposition (CVD) growth process.



April 22, 2026
 IGI Report Number **LG790675732**
 OVAL BRILLIANT
 LABORATORY GROWN DIAMOND
6.46 X 4.26 X 2.40 MM
 Carat Weight **0.46 CARAT**
 Color Grade **FANCY INTENSE YELLOW**
 Clarity Grade **VS 2**
 Polish **VERY GOOD**
 Symmetry **VERY GOOD**
 Fluorescence **NONE**
 Inscription(s) **IGI LG790675732**
 Comments: This Laboratory Grown Diamond was created by Chemical Vapor Deposition (CVD) growth process.



THIS DOCUMENT WAS PRODUCED WITH THE FOLLOWING SECURITY MEASURES: SPECIAL DOCUMENT PAPER, INK SCREENS, WATERMARK, BACKGROUND DESIGNS, HOLOGRAM AND OTHER SECURITY FEATURES NOT LISTED AND DO EXCEED DOCUMENT SECURITY INDUSTRY GUIDELINES.