



ELECTRONIC COPY

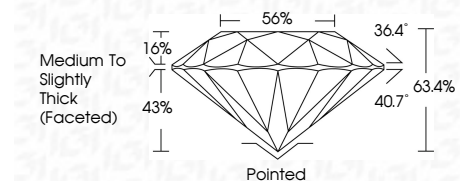
LG790675129 Report verification at igi.org



April 11, 2026 IGI Report Number LG790675129 Description LABORATORY GROWN DIAMOND Shape and Cutting Style ROUND BRILLIANT Measurements 7.32 - 7.35 X 4.65 MM

GRADING RESULTS

Carat Weight 1.56 CARAT Color Grade E Clarity Grade VS 1 Cut Grade EXCELLENT



ADDITIONAL GRADING INFORMATION

Polish EXCELLENT Symmetry EXCELLENT Fluorescence NONE Inscription(s) (IGI) LG790675129 Comments: This Laboratory Grown Diamond was created by Chemical Vapor Deposition (CVD) growth process. Type IIa



April 11, 2026 IGI Report No LG790675129 ROUND BRILLIANT 7.32 - 7.35 X 4.65 MM 1.56 CARAT E VS 1 EXCELLENT 63.4% 56% Medium To Slightly Thick (Faceted) Pointed EXCELLENT EXCELLENT NONE (IGI) LG790675129 Comments: This Laboratory Grown Diamond was created by Chemical Vapor Deposition (CVD) growth process. Type IIa

April 11, 2026 IGI Report Number LG790675129 Description LABORATORY GROWN DIAMOND Shape and Cutting Style ROUND BRILLIANT Measurements 7.32 - 7.35 X 4.65 MM

GRADING RESULTS

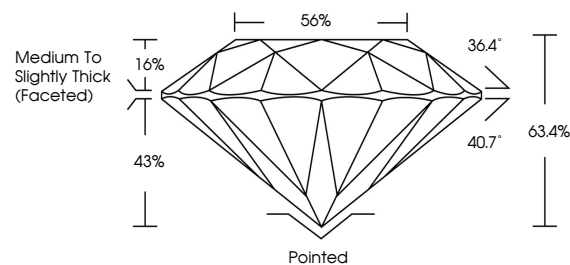
Carat Weight 1.56 CARAT Color Grade E Clarity Grade VS 1 Cut Grade EXCELLENT

ADDITIONAL GRADING INFORMATION

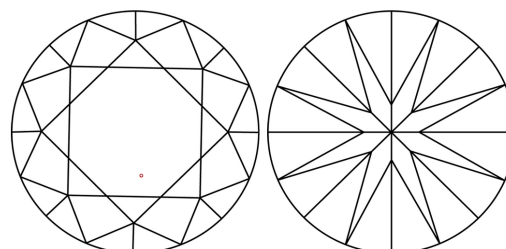
Polish EXCELLENT Symmetry EXCELLENT Fluorescence NONE Inscription(s) (IGI) LG790675129

Comments: This Laboratory Grown Diamond was created by Chemical Vapor Deposition (CVD) growth process. Type IIa

PROPORTIONS

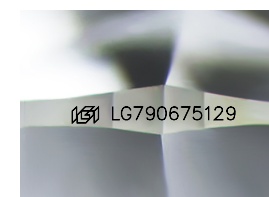


CLARITY CHARACTERISTICS



KEY TO SYMBOLS

Red symbols indicate internal characteristics. Green symbols indicate external characteristics.



Sample Image Used

COLOR

D E F G H I J Faint Very Light Light

CLARITY

FL IF VS 1-2 VS 1-2 SI 1-2 I 1-3 Flawless Internally Flawless Very Very Slightly Included Very Slightly Included Slightly Included Included

