



ELECTRONIC COPY

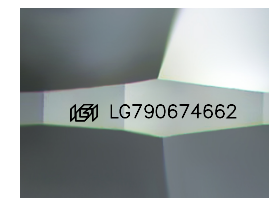
LG790674662
Report verification at igi.org



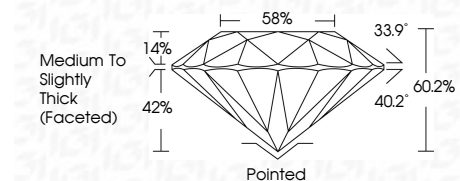
April 15, 2026
IGI Report Number LG790674662
Description LABORATORY GROWN DIAMOND
Shape and Cutting Style ROUND BRILLIANT
Measurements 9.85 - 9.89 X 5.94 MM

GRADING RESULTS

Carat Weight 3.57 CARATS
Color Grade E
Clarity Grade VVS 2
Cut Grade IDEAL



Sample Image Used



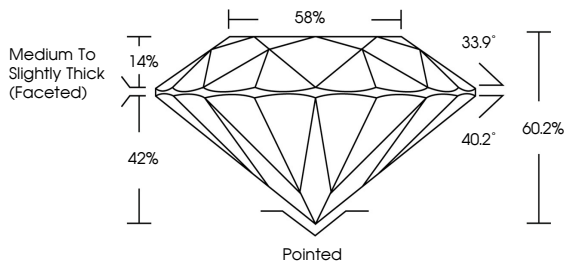
ADDITIONAL GRADING INFORMATION

Polish EXCELLENT
Symmetry EXCELLENT
Fluorescence NONE
Inscription(s) IGI LG790674662
Comments: This Laboratory Grown Diamond was created by Chemical Vapor Deposition (CVD) growth process. Type IIa

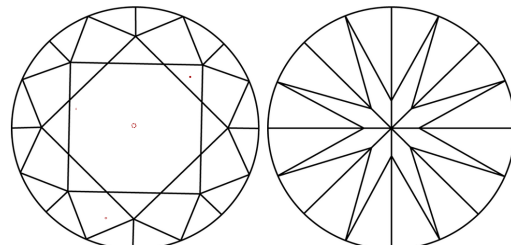


Table with 2 columns: Property and Value. Includes Carat Weight (3.57 CARATS), Color Grade (E), Clarity Grade (VVS 2), Cut Grade (IDEAL), and other grading details.

PROPORTIONS



CLARITY CHARACTERISTICS



KEY TO SYMBOLS

Red symbols indicate internal characteristics.
Green symbols indicate external characteristics.

COLOR

Color scale table with columns D, E, F, G, H, I, J, Faint, Very Light, Light.

CLARITY

Clarity scale table with columns FL, IF, VVS 1-2, VS 1-2, SI 1-2, I 1-3.



April 15, 2026
IGI Report Number LG790674662
Description LABORATORY GROWN DIAMOND
Shape and Cutting Style ROUND BRILLIANT
Measurements 9.85 - 9.89 X 5.94 MM
GRADING RESULTS
Carat Weight 3.57 CARATS
Color Grade E
Clarity Grade VVS 2
Cut Grade IDEAL
ADDITIONAL GRADING INFORMATION
Polish EXCELLENT
Symmetry EXCELLENT
Fluorescence NONE
Inscription(s) IGI LG790674662
Comments: This Laboratory Grown Diamond was created by Chemical Vapor Deposition (CVD) growth process. Type IIa