



**ELECTRONIC COPY**

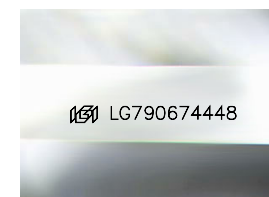
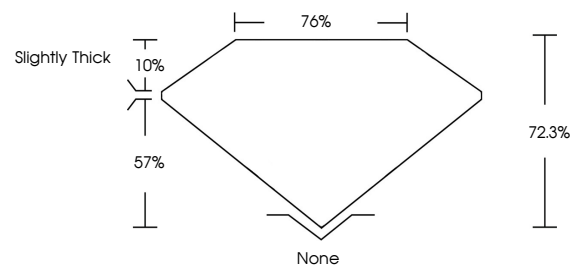
LG790674448  
Report verification at igi.org



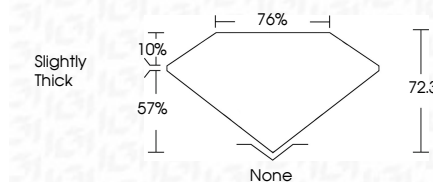
April 13, 2026  
IGI Report Number **LG790674448**  
Description **LABORATORY GROWN DIAMOND**  
Shape and Cutting Style **PRINCESS CUT**  
Measurements **5.50 X 5.45 X 3.94 MM**  
**GRADING RESULTS**  
Carat Weight **1.04 CARAT**  
Color Grade **FANCY VIVID BLUE**  
Clarity Grade **VS 1**

April 13, 2026  
IGI Report Number **LG790674448**  
Description **LABORATORY GROWN DIAMOND**  
Shape and Cutting Style **PRINCESS CUT**  
Measurements **5.50 X 5.45 X 3.94 MM**  
**GRADING RESULTS**  
Carat Weight **1.04 CARAT**  
Color Grade **FANCY VIVID BLUE**  
Clarity Grade **VS 1**

**PROPORTIONS**



Sample Image Used



**ADDITIONAL GRADING INFORMATION**

Polish **VERY GOOD**  
Symmetry **VERY GOOD**  
Fluorescence **NONE**  
Inscription(s) **IGI LG790674448**

Comments: This Laboratory Grown Diamond was created by Chemical Vapor Deposition (CVD) growth process. Indications of post-growth treatment.

**ADDITIONAL GRADING INFORMATION**

Polish **VERY GOOD**  
Symmetry **VERY GOOD**  
Fluorescence **NONE**  
Inscription(s) **IGI LG790674448**

Comments: This Laboratory Grown Diamond was created by Chemical Vapor Deposition (CVD) growth process. Indications of post-growth treatment.

**COLOR**

D E F G H I J Faint Very Light Light

**CLARITY**

FL	IF	VS <sup>1-2</sup>	VS <sup>1-2</sup>	SI <sup>1-2</sup>	I <sup>1-3</sup>
Flawless	Internally Flawless	Very Very Slightly Included	Very Slightly Included	Slightly Included	Included



**IGI**



April 13, 2026  
IGI Report No **LG790674448**  
**PRINCESS CUT**  
**1.04 CARAT**  
Carat Weight **5.50 X 5.45 X 3.94 MM**  
Color Grade **FANCY VIVID BLUE**  
Clarity Grade **VS 1**  
Table **76%**  
Depth **72.3%**  
Girdle **Slightly Thick**  
Culet **None**  
Polish **VERY GOOD**  
Symmetry **VERY GOOD**  
Fluorescence **NONE**  
Inscription(s) **IGI LG790674448**  
Comments: This Laboratory Grown Diamond was created by Chemical Vapor Deposition (CVD) growth process. Indications of post-growth treatment.