



**INTERNATIONAL  
GEMOLOGICAL  
INSTITUTE**

**ELECTRONIC COPY**

**LABORATORY GROWN DIAMOND REPORT**

April 17, 2026  
IGI Report Number **LG790674407**  
Description **LABORATORY GROWN DIAMOND**  
Shape and Cutting Style **ROUND BRILLIANT**  
Measurements **4.65 - 4.77 X 3.07 MM**

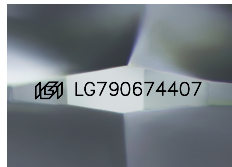
**GRADING RESULTS**

Carat Weight **0.43 CARAT**  
Color Grade **LIGHT BROWN**  
Clarity Grade **VS 2**  
Cut Grade **VERY GOOD**

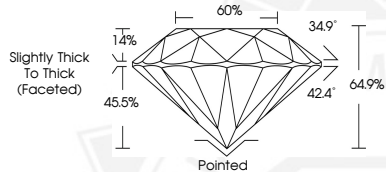
**ADDITIONAL GRADING INFORMATION**

Polish **VERY GOOD**  
Symmetry **VERY GOOD**  
Fluorescence **NONE**  
Inscription(s) **IGI LG790674407**

Comments: This Laboratory Grown Diamond was created by Chemical Vapor Deposition (CVD) growth process. Indications of post-growth treatment.



Sample Image Used



April 17, 2026  
IGI Report Number **LG790674407**  
**ROUND BRILLIANT**  
**LABORATORY GROWN DIAMOND**  
**4.65 - 4.77 X 3.07 MM**  
Carat Weight **0.43 CARAT**  
Color Grade **LIGHT BROWN**  
Clarity Grade **VS 2**  
Cut Grade **VERY GOOD**  
Polish **VERY GOOD**  
Symmetry **VERY GOOD**  
Fluorescence **NONE**  
Inscription(s) **IGI LG790674407**

Comments: This Laboratory Grown Diamond was created by Chemical Vapor Deposition (CVD) growth process. Indications of post-growth treatment.



April 17, 2026  
IGI Report Number **LG790674407**  
**ROUND BRILLIANT**  
**LABORATORY GROWN DIAMOND**  
**4.65 - 4.77 X 3.07 MM**  
Carat Weight **0.43 CARAT**  
Color Grade **LIGHT BROWN**  
Clarity Grade **VS 2**  
Cut Grade **VERY GOOD**  
Polish **VERY GOOD**  
Symmetry **VERY GOOD**  
Fluorescence **NONE**  
Inscription(s) **IGI LG790674407**

Comments: This Laboratory Grown Diamond was created by Chemical Vapor Deposition (CVD) growth process. Indications of post-growth treatment.



THIS DOCUMENT WAS PRODUCED WITH THE FOLLOWING SECURITY MEASURES: SPECIAL DOCUMENT PAPER, INK SCREENS, WATERMARK, BACKGROUND DESIGNS, HOLOGRAM AND OTHER SECURITY FEATURES NOT LISTED AND DO EXCEED DOCUMENT SECURITY INDUSTRY GUIDELINES.

For terms & conditions and to verify this report, please visit [www.igi.org](http://www.igi.org)