



**ELECTRONIC COPY**

LG790674198  
Report verification at igi.org



April 16, 2026  
IGI Report Number **LG790674198**  
Description **LABORATORY GROWN DIAMOND**  
Shape and Cutting Style **SQUARE CUSHION MODIFIED BRILLIANT**  
Measurements **7.93 X 7.56 X 5.00 MM**  
**GRADING RESULTS**  
Carat Weight **2.68 CARATS**  
Color Grade **FANCY INTENSE YELLOW**  
Clarity Grade **VS 2**

April 16, 2026  
IGI Report Number **LG790674198**  
Description **LABORATORY GROWN DIAMOND**  
Shape and Cutting Style **SQUARE CUSHION MODIFIED BRILLIANT**  
Measurements **7.93 X 7.56 X 5.00 MM**

**GRADING RESULTS**

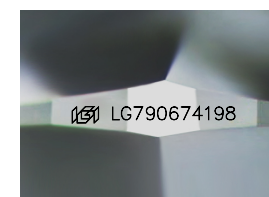
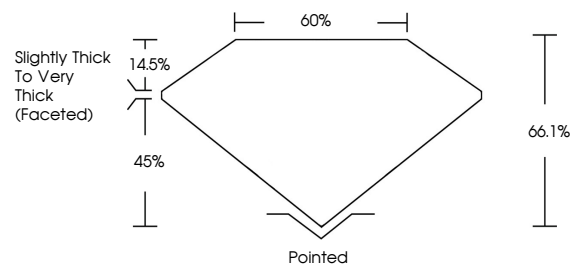
Carat Weight **2.68 CARATS**  
Color Grade **FANCY INTENSE YELLOW**  
Clarity Grade **VS 2**

**ADDITIONAL GRADING INFORMATION**

Polish **EXCELLENT**  
Symmetry **EXCELLENT**  
Fluorescence **NONE**  
Inscription(s) **IGI LG790674198**

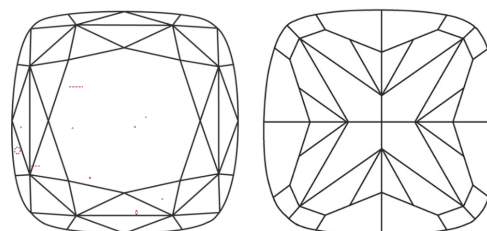
Comments: This Laboratory Grown Diamond was created by Chemical Vapor Deposition (CVD) growth process.

**PROPORTIONS**



Sample Image Used

**CLARITY CHARACTERISTICS**



**KEY TO SYMBOLS**

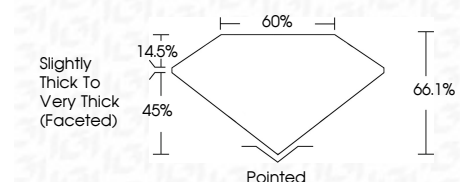
Red symbols indicate internal characteristics.  
Green symbols indicate external characteristics.

**COLOR**

D E F G H I J Faint Very Light Light

**CLARITY**

FL	IF	VS <sup>1-2</sup>	VS <sup>1-2</sup>	SI <sup>1-2</sup>	I <sup>1-3</sup>
Flawless	Internally Flawless	Very Very Slightly Included	Very Slightly Included	Slightly Included	Included



**ADDITIONAL GRADING INFORMATION**

Polish **EXCELLENT**  
Symmetry **EXCELLENT**  
Fluorescence **NONE**  
Inscription(s) **IGI LG790674198**  
Comments: This Laboratory Grown Diamond was created by Chemical Vapor Deposition (CVD) growth process.



April 16, 2026  
IGI Report No LG790674198  
**SQUARE CUSHION MODIFIED BRILLIANT**  
7.93 X 7.56 X 5.00 MM  
2.68 CARATS  
Carat Weight  
FANCY INTENSE YELLOW  
Color Grade  
VS 2  
Clarity Grade  
66.1%  
60%  
Slightly Thick To Very Thick (Faceted)  
Pointed  
Polish  
EXCELLENT  
Symmetry  
EXCELLENT  
Fluorescence  
NONE  
Inscription(s)  
IGI LG790674198  
Comments: This Laboratory Grown Diamond was created by Chemical Vapor Deposition (CVD) growth process.