



ELECTRONIC COPY

LG790673562
Report verification at igi.org



April 24, 2026
IGI Report Number **LG790673562**
Description **LABORATORY GROWN DIAMOND**
Shape and Cutting Style **SQUARE CUSHION MODIFIED BRILLIANT**
Measurements **10.62 X 10.58 X 6.82 MM**
GRADING RESULTS
Carat Weight **7.02 CARATS**
Color Grade **FANCY VIVID RED**
Clarity Grade **VS 1**

April 24, 2026
IGI Report Number **LG790673562**
Description **LABORATORY GROWN DIAMOND**
Shape and Cutting Style **SQUARE CUSHION MODIFIED BRILLIANT**
Measurements **10.62 X 10.58 X 6.82 MM**

GRADING RESULTS

Carat Weight **7.02 CARATS**
Color Grade **FANCY VIVID RED**
Clarity Grade **VS 1**

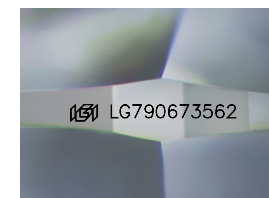
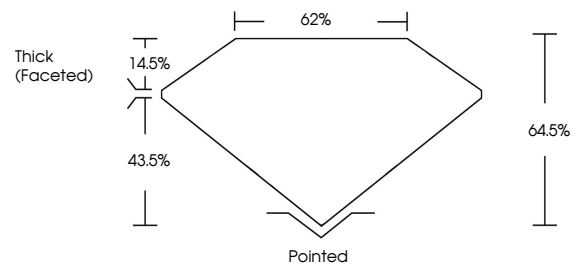
ADDITIONAL GRADING INFORMATION

Polish **EXCELLENT**
Symmetry **EXCELLENT**
Fluorescence **SLIGHT**
Inscription(s) **IGI LG790673562**

Comments: This Laboratory Grown Diamond was created by Chemical Vapor Deposition (CVD) growth process.
Indications of post-growth treatment.

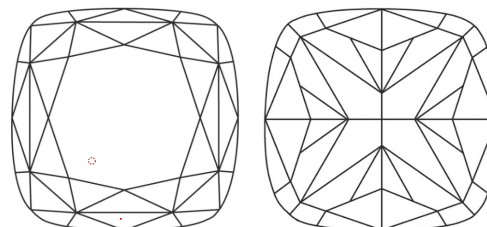
Secondary color: Orange

PROPORTIONS



Sample Image Used

CLARITY CHARACTERISTICS



KEY TO SYMBOLS

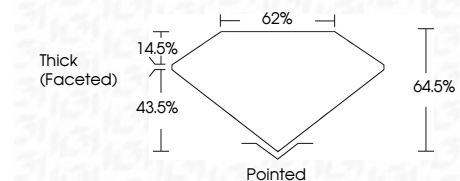
Red symbols indicate internal characteristics.
Green symbols indicate external characteristics.

COLOR

D E F G H I J Faint Very Light Light

CLARITY

FL	IF	VS ¹⁻²	VS ¹⁻²	SI ¹⁻²	I ¹⁻³
Flawless	Internally Flawless	Very Very Slightly Included	Very Slightly Included	Slightly Included	Included



ADDITIONAL GRADING INFORMATION

Polish **EXCELLENT**
Symmetry **EXCELLENT**
Fluorescence **SLIGHT**
Inscription(s) **IGI LG790673562**
Comments: This Laboratory Grown Diamond was created by Chemical Vapor Deposition (CVD) growth process.
Indications of post-growth treatment.
Secondary color: Orange



April 24, 2026
IGI Report No LG790673562
SQUARE CUSHION MODIFIED BRILLIANT
7.02 CARATS
FANCY VIVID RED
VS 1
64.5%
62%
Thick (Faceted)
Pointed
EXCELLENT
EXCELLENT
SLIGHT
IGI LG790673562
Comments: This Laboratory Grown Diamond was created by Chemical Vapor Deposition (CVD) growth process.
Indications of post-growth treatment.
Secondary color: Orange