



**ELECTRONIC COPY**

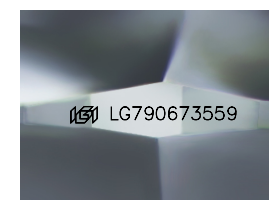
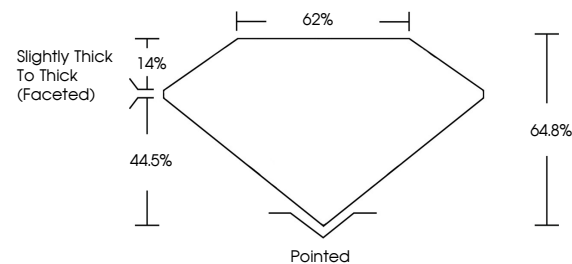
LG790673559  
Report verification at igi.org



April 24, 2026  
IGI Report Number **LG790673559**  
Description **LABORATORY GROWN DIAMOND**  
Shape and Cutting Style **SQUARE CUSHION MODIFIED BRILLIANT**  
Measurements **8.08 X 8.06 X 5.22 MM**  
**GRADING RESULTS**  
Carat Weight **3.03 CARATS**  
Color Grade **FANCY YELLOW**  
Clarity Grade **VS 2**

April 24, 2026  
IGI Report Number **LG790673559**  
Description **LABORATORY GROWN DIAMOND**  
Shape and Cutting Style **SQUARE CUSHION MODIFIED BRILLIANT**  
Measurements **8.08 X 8.06 X 5.22 MM**

**PROPORTIONS**

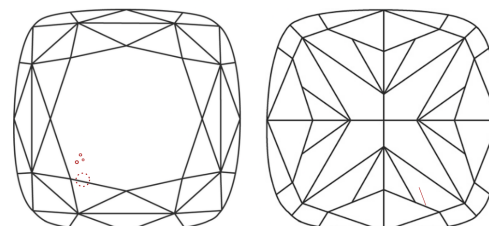


Sample Image Used

**GRADING RESULTS**

Carat Weight **3.03 CARATS**  
Color Grade **FANCY YELLOW**  
Clarity Grade **VS 2**

**CLARITY CHARACTERISTICS**



**KEY TO SYMBOLS**

Red symbols indicate internal characteristics.  
Green symbols indicate external characteristics.

**ADDITIONAL GRADING INFORMATION**

Polish **EXCELLENT**  
Symmetry **EXCELLENT**  
Fluorescence **NONE**  
Inscription(s) **IGI LG790673559**

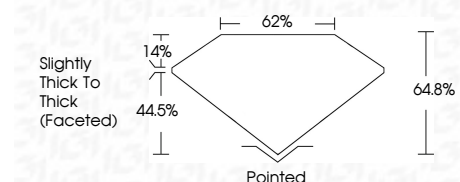
Comments: This Laboratory Grown Diamond was created by Chemical Vapor Deposition (CVD) growth process.

**COLOR**

D E F G H I J Faint Very Light Light

**CLARITY**

FL	IF	VS <sup>1-2</sup>	VS <sup>1-2</sup>	SI <sup>1-2</sup>	I <sup>1-3</sup>
Flawless	Internally Flawless	Very Very Slightly Included	Very Slightly Included	Slightly Included	Included



**ADDITIONAL GRADING INFORMATION**

Polish **EXCELLENT**  
Symmetry **EXCELLENT**  
Fluorescence **NONE**  
Inscription(s) **IGI LG790673559**  
Comments: This Laboratory Grown Diamond was created by Chemical Vapor Deposition (CVD) growth process.



**IGI**



April 24, 2026  
IGI Report No LG790673559  
**SQUARE CUSHION MODIFIED BRILLIANT**  
8.08 X 8.06 X 5.22 MM  
3.03 CARATS  
FANCY YELLOW  
VS 2  
64.8%  
62%  
Slightly Thick To Thick (Faceted)  
Pointed  
EXCELLENT  
EXCELLENT  
NONE  
IGI LG790673559

Comments: This Laboratory Grown Diamond was created by Chemical Vapor Deposition (CVD) growth process.