



**ELECTRONIC COPY**

LG790673539  
Report verification at igi.org



April 29, 2026  
IGI Report Number **LG790673539**  
Description **LABORATORY GROWN DIAMOND**  
Shape and Cutting Style **SQUARE CUSHION MODIFIED BRILLIANT**  
Measurements **6.07 X 6.03 X 3.71 MM**  
**GRADING RESULTS**  
Carat Weight **1.23 CARAT**  
Color Grade **FANCY VIVID PINK**  
Clarity Grade **VVS 2**

**LABORATORY GROWN DIAMOND REPORT**

April 29, 2026  
IGI Report Number **LG790673539**  
Description **LABORATORY GROWN DIAMOND**  
Shape and Cutting Style **SQUARE CUSHION MODIFIED BRILLIANT**  
Measurements **6.07 X 6.03 X 3.71 MM**

**GRADING RESULTS**

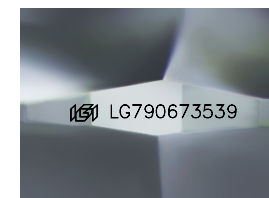
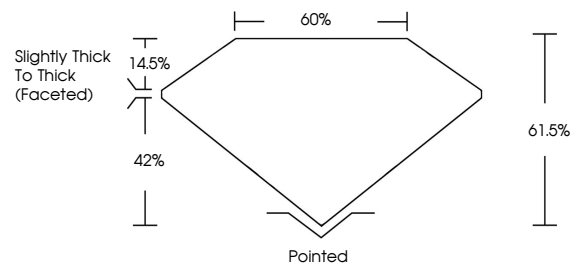
Carat Weight **1.23 CARAT**  
Color Grade **FANCY VIVID PINK**  
Clarity Grade **VVS 2**

**ADDITIONAL GRADING INFORMATION**

Polish **EXCELLENT**  
Symmetry **EXCELLENT**  
Fluorescence **SLIGHT**  
Inscription(s) **IGI LG790673539**

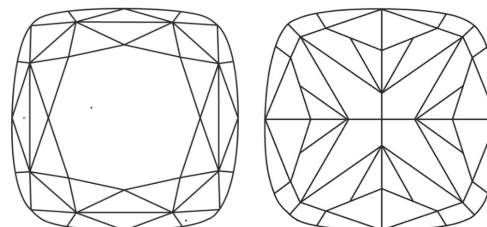
Comments: This Laboratory Grown Diamond was created by Chemical Vapor Deposition (CVD) growth process. Indications of post-growth treatment.

**PROPORTIONS**



Sample Image Used

**CLARITY CHARACTERISTICS**



**KEY TO SYMBOLS**

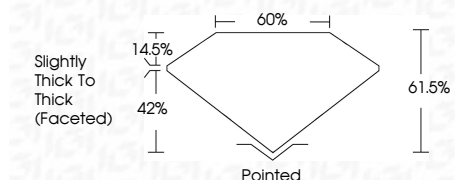
Red symbols indicate internal characteristics.  
Green symbols indicate external characteristics.

**COLOR**

D E F G H I J Faint Very Light Light

**CLARITY**

FL	IF	VVS <sup>1-2</sup>	VS <sup>1-2</sup>	SI <sup>1-2</sup>	I <sup>1-3</sup>
Flawless	Internally Flawless	Very Very Slightly Included	Very Slightly Included	Slightly Included	Included



**ADDITIONAL GRADING INFORMATION**

Polish **EXCELLENT**  
Symmetry **EXCELLENT**  
Fluorescence **SLIGHT**  
Inscription(s) **IGI LG790673539**  
Comments: This Laboratory Grown Diamond was created by Chemical Vapor Deposition (CVD) growth process. Indications of post-growth treatment.



April 29, 2026  
IGI Report No LG790673539  
**SQUARE CUSHION MODIFIED BRILLIANT**  
6.07 X 6.03 X 3.71 MM  
1.23 CARAT  
FANCY VIVID PINK  
VVS 2  
61.05%  
60%  
Slightly Thick To Thick (Faceted)  
Pointed  
EXCELLENT  
EXCELLENT  
SLIGHT  
IGI LG790673539  
Comments: This Laboratory Grown Diamond was created by Chemical Vapor Deposition (CVD) growth process. Indications of post-growth treatment.