



ELECTRONIC COPY

LG790673240
Report verification at igi.org



April 17, 2026
IGI Report Number **LG790673240**
Description **LABORATORY GROWN DIAMOND**
Shape and Cutting Style **CUT CORNERED
RECTANGULAR MODIFIED
BRILLIANT**
Measurements **10.50 X 7.54 X 4.92 MM**
GRADING RESULTS
Carat Weight **3.32 CARATS**
Color Grade **D**
Clarity Grade **VS 1**

April 17, 2026
IGI Report Number **LG790673240**
Description **LABORATORY GROWN DIAMOND**
Shape and Cutting Style **CUT CORNERED RECTANGULAR
MODIFIED BRILLIANT**
Measurements **10.50 X 7.54 X 4.92 MM**

GRADING RESULTS

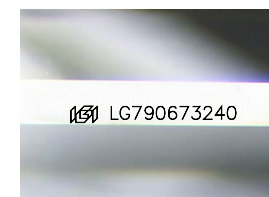
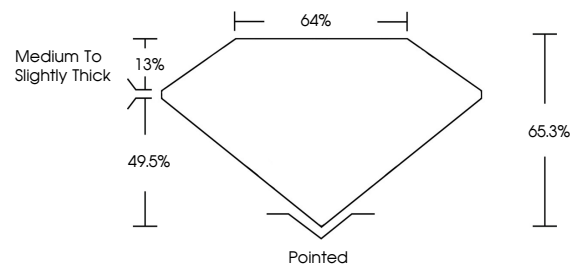
Carat Weight **3.32 CARATS**
Color Grade **D**
Clarity Grade **VS 1**

ADDITIONAL GRADING INFORMATION

Polish **EXCELLENT**
Symmetry **EXCELLENT**
Fluorescence **NONE**
Inscription(s) **IGI LG790673240**

Comments: This Laboratory Grown Diamond was created by Chemical Vapor Deposition (CVD) growth process. Type IIa

PROPORTIONS



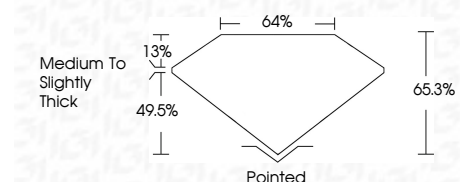
Sample Image Used

COLOR

D E F G H I J Faint Very Light Light

CLARITY

FL	IF	VS ¹⁻²	VS ¹⁻²	SI ¹⁻²	I ¹⁻³
Flawless	Internally Flawless	Very Very Slightly Included	Very Slightly Included	Slightly Included	Included



ADDITIONAL GRADING INFORMATION

Polish **EXCELLENT**
Symmetry **EXCELLENT**
Fluorescence **NONE**
Inscription(s) **IGI LG790673240**
Comments: This Laboratory Grown Diamond was created by Chemical Vapor Deposition (CVD) growth process. Type IIa



April 17, 2026
IGI Report No **LG790673240**
CUT CORNERED RECT. MODIFIED BRILLIANT
10.50 X 7.54 X 4.92 MM
Carat Weight **3.32 CARATS**
Color Grade **D**
Clarity Grade **VS 1**
Table **65.3%**
Girdle **49.5%**
Culet **Medium to Slightly Thick**
Polish **Pointed**
Symmetry **EXCELLENT**
Fluorescence **NONE**
Inscription(s) **IGI LG790673240**
Comments: This Laboratory Grown Diamond was created by Chemical Vapor Deposition (CVD) growth process. Type IIa