



ELECTRONIC COPY

LG790671879
Report verification at igi.org



April 15, 2026
IGI Report Number **LG790671879**
Description **LABORATORY GROWN DIAMOND**
Shape and Cutting Style **CUT CORNERED
RECTANGULAR MODIFIED
BRILLIANT**
Measurements **15.40 X 10.51 X 6.89 MM**
GRADING RESULTS
Carat Weight **9.41 CARATS**
Color Grade **FANCY INTENSE PINK**
Clarity Grade **VVS 2**

April 15, 2026
IGI Report Number **LG790671879**
Description **LABORATORY GROWN DIAMOND**
Shape and Cutting Style **CUT CORNERED RECTANGULAR
MODIFIED BRILLIANT**
Measurements **15.40 X 10.51 X 6.89 MM**

GRADING RESULTS

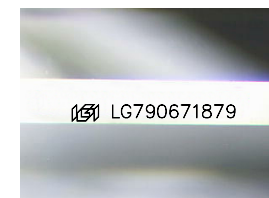
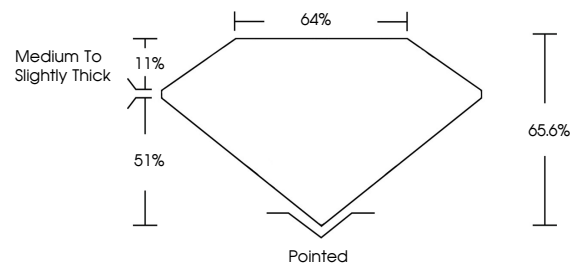
Carat Weight **9.41 CARATS**
Color Grade **FANCY INTENSE PINK**
Clarity Grade **VVS 2**

ADDITIONAL GRADING INFORMATION

Polish **EXCELLENT**
Symmetry **EXCELLENT**
Fluorescence **STRONG**
Inscription(s) **IGI LG790671879**

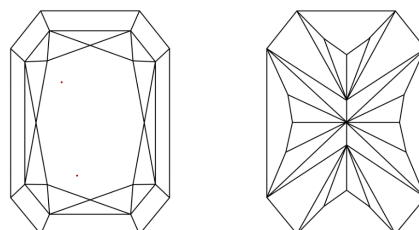
Comments: This Laboratory Grown Diamond was created by Chemical Vapor Deposition (CVD) growth process. Indications of post-growth treatment.

PROPORTIONS



Sample Image Used

CLARITY CHARACTERISTICS



KEY TO SYMBOLS

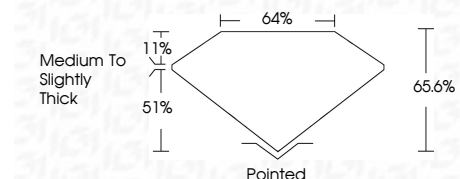
Red symbols indicate internal characteristics.
Green symbols indicate external characteristics.

COLOR

D E F G H I J Faint Very Light Light

CLARITY

FL	IF	VVS ¹⁻²	VS ¹⁻²	SI ¹⁻²	I ¹⁻³
Flawless	Internally Flawless	Very Very Slightly Included	Very Slightly Included	Slightly Included	Included



ADDITIONAL GRADING INFORMATION

Polish **EXCELLENT**
Symmetry **EXCELLENT**
Fluorescence **STRONG**
Inscription(s) **IGI LG790671879**
Comments: This Laboratory Grown Diamond was created by Chemical Vapor Deposition (CVD) growth process. Indications of post-growth treatment.



IGI



April 15, 2026
IGI Report No LG790671879
CUT CORNERED RECT. MODIFIED BRILLIANT
15.40 X 10.51 X 6.89 MM
9.41 CARATS
FANCY INTENSE PINK
VVS 2
65.6%
64%
Medium to Slightly Thick
Pointed
EXCELLENT
EXCELLENT
STRONG
IGI LG790671879

Comments: This Laboratory Grown Diamond was created by Chemical Vapor Deposition (CVD) growth process. Indications of post-growth treatment.