



ELECTRONIC COPY

LG790670705
Report verification at igi.org



April 14, 2026
IGI Report Number **LG790670705**
Description **LABORATORY GROWN DIAMOND**
Shape and Cutting Style **CUSHION MODIFIED BRILLIANT**
Measurements **8.11 X 7.47 X 4.75 MM**
GRADING RESULTS
Carat Weight **2.59 CARATS**
Color Grade **FANCY INTENSE YELLOW**
Clarity Grade **VVS 2**

April 14, 2026
IGI Report Number **LG790670705**
Description **LABORATORY GROWN DIAMOND**
Shape and Cutting Style **CUSHION MODIFIED BRILLIANT**
Measurements **8.11 X 7.47 X 4.75 MM**

GRADING RESULTS

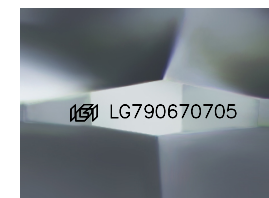
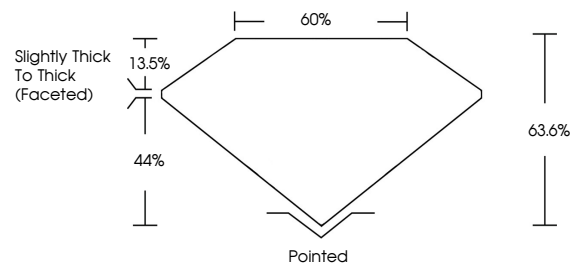
Carat Weight **2.59 CARATS**
Color Grade **FANCY INTENSE YELLOW**
Clarity Grade **VVS 2**

ADDITIONAL GRADING INFORMATION

Polish **EXCELLENT**
Symmetry **EXCELLENT**
Fluorescence **NONE**
Inscription(s) **IGI LG790670705**

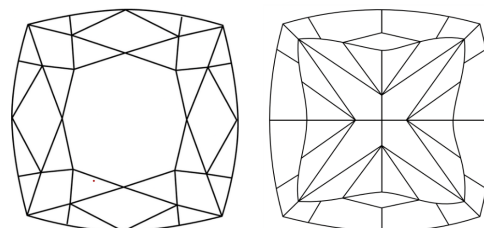
Comments: This Laboratory Grown Diamond was created by Chemical Vapor Deposition (CVD) growth process.

PROPORTIONS



Sample Image Used

CLARITY CHARACTERISTICS



KEY TO SYMBOLS

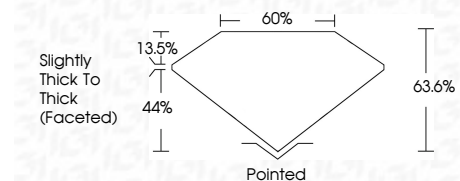
Red symbols indicate internal characteristics.
Green symbols indicate external characteristics.

COLOR

D E F G H I J Faint Very Light Light

CLARITY

FL	IF	VVS ¹⁻²	VS ¹⁻²	SI ¹⁻²	I ¹⁻³
Flawless	Internally Flawless	Very Very Slightly Included	Very Slightly Included	Slightly Included	Included



ADDITIONAL GRADING INFORMATION

Polish **EXCELLENT**
Symmetry **EXCELLENT**
Fluorescence **NONE**
Inscription(s) **IGI LG790670705**
Comments: This Laboratory Grown Diamond was created by Chemical Vapor Deposition (CVD) growth process.



IGI



April 14, 2026
IGI Report No **LG790670705**
CUSHION MODIFIED BRILLIANT
8.11 X 7.47 X 4.75 MM
Carat Weight **2.59 CARATS**
Color Grade **FANCY INTENSE YELLOW**
Clarity Grade **VVS 2**
Depth **63.6%**
Table **60%**
Girdle **Slightly Thick To Thick (Faceted)**
Culet **Pointed**
Polish **EXCELLENT**
Symmetry **EXCELLENT**
Fluorescence **NONE**
Inscription(s) **IGI LG790670705**
Comments: This Laboratory Grown Diamond was created by Chemical Vapor Deposition (CVD) growth process.